

Rhou antibody - N-terminal region

Rabbit Polyclonal Antibody

Catalog # AI11868

Product Information

| | |
|-------------------|---|
| Application | WB |
| Primary Accession | Q9EQT3 |
| Other Accession | NM_133955 , NP_598716 |
| Reactivity | Human, Mouse, Rat, Rabbit, Zebrafish, Pig, Dog, Horse, Bovine |
| Predicted | Human, Mouse, Dog, Bovine |
| Host | Rabbit |
| Clonality | Polyclonal |
| Calculated MW | 28354 |

Additional Information

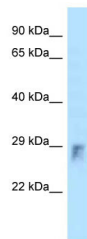
| | |
|-----------------------------|--|
| Gene ID | 69581 |
| Alias Symbol Other Names | 2310026M05Rik, AI182090, Arhu, CDC42L1, G28K, WRCH-1, WRCH1, mG28K Rho-related GTP-binding protein RhoU, Rho GTPase-like protein ARHU, Wnt-1 responsive Cdc42 homolog 1, WRCH-1, Rhou {ECO:0000312 MGI:MGI:1916831} |
| Format | Liquid. Purified antibody supplied in 1x PBS buffer with 0.09% (w/v) sodium azide and 2% sucrose. |
| Reconstitution & Storage | Add 50 ul of distilled water. Final anti-Rhou antibody concentration is 1 mg/ml in PBS buffer with 2% sucrose. For longer periods of storage, store at 20°C. Avoid repeat freeze-thaw cycles. |
| Precautions | Rhou antibody - N-terminal region is for research use only and not for use in diagnostic or therapeutic procedures. |

Protein Information

| | |
|-------------------|---|
| Name | Rhou {ECO:0000312 MGI:MGI:1916831} |
| Function | Binds to and activates protein kinase PAK1. Plays a role in the regulation of cell morphology, cytoskeletal organization and focal adhesion assembly during cell migration. Also stimulates quiescent cells to reenter the cell cycle. Has no detectable GTPase activity but its high intrinsic guanine nucleotide exchange activity suggests it is constitutively GTP-bound. |
| Cellular Location | Cell membrane {ECO:0000250 UniProtKB:Q7L0Q8}; Lipid-anchor {ECO:0000250 UniProtKB:Q7L0Q8}; Cytoplasmic side {ECO:0000250 UniProtKB:Q7L0Q8}. Golgi apparatus membrane |

{ECO:0000250|UniProtKB:Q7L0Q8}; Lipid-anchor
{ECO:0000250|UniProtKB:Q7L0Q8}. Cell junction, focal adhesion
{ECO:0000250|UniProtKB:Q7L0Q8}. Cell projection, podosome
{ECO:0000250|UniProtKB:Q7L0Q8}. Note=Localizes to podosomes in SRC-transformed cells. {ECO:0000250|UniProtKB:Q7L0Q8}

Images



WB Suggested Anti-Rhou Antibody Titration: 1.0 µg/ml
Positive Control: Mouse Small Intestine

Please note: All products are 'FOR RESEARCH USE ONLY. NOT FOR USE IN DIAGNOSTIC OR THERAPEUTIC PROCEDURES'.