

# VANGL1 antibody - N-terminal region

Rabbit Polyclonal Antibody

Catalog # AI11871

## Product Information

---

<b>Application</b>	WB
<b>Primary Accession</b>	<a href="#">Q8TAA9</a>
<b>Other Accession</b>	<a href="#">NM_138959</a> , <a href="#">NP_620409</a>
<b>Reactivity</b>	Human, Mouse, Rat, Rabbit, Dog, Horse, Bovine
<b>Predicted</b>	Mouse, Rat, Rabbit, Pig, Dog, Horse, Bovine
<b>Host</b>	Rabbit
<b>Clonality</b>	Polyclonal
<b>Calculated MW</b>	59975

## Additional Information

---

<b>Gene ID</b>	81839
<b>Alias Symbol</b>	KITENIN, LPP2, MGC5338, STB2, STBM2
<b>Other Names</b>	Vang-like protein 1, Loop-tail protein 2 homolog, LPP2, Strabismus 2, Van Gogh-like protein 1, VANGL1, STB2
<b>Format</b>	Liquid. Purified antibody supplied in 1x PBS buffer with 0.09% (w/v) sodium azide and 2% sucrose.
<b>Reconstitution &amp; Storage</b>	Add 50 ul of distilled water. Final anti-VANGL1 antibody concentration is 1 mg/ml in PBS buffer with 2% sucrose. For longer periods of storage, store at 20°C. Avoid repeat freeze-thaw cycles.
<b>Precautions</b>	VANGL1 antibody - N-terminal region is for research use only and not for use in diagnostic or therapeutic procedures.

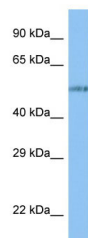
## Protein Information

---

<b>Name</b>	VANGL1
<b>Synonyms</b>	STB2
<b>Cellular Location</b>	Cell membrane; Multi-pass membrane protein
<b>Tissue Location</b>	According to PubMed:11956595, ubiquitously expressed. According to PubMed:12011995, expressed specifically in testis and ovary.

## Images

---



WB Suggested Anti-VANGL1 Antibody Titration: 1.0 µg/ml  
Positive Control: RPMI-8226 Whole Cell

Please note: All products are 'FOR RESEARCH USE ONLY. NOT FOR USE IN DIAGNOSTIC OR THERAPEUTIC PROCEDURES'.