

# Cdc25b Antibody - middle region

Rabbit Polyclonal Antibody

Catalog # AI11876

## Product Information

---

<b>Application</b>	WB
<b>Primary Accession</b>	<a href="#">P30306</a>
<b>Other Accession</b>	<a href="#">NM_023117</a> , <a href="#">NP_075606</a>
<b>Reactivity</b>	Human, Mouse, Rat, Pig, Dog, Horse, Bovine
<b>Predicted</b>	Human, Mouse, Rat, Pig, Dog, Horse, Bovine
<b>Host</b>	Rabbit
<b>Clonality</b>	Polyclonal
<b>Calculated MW</b>	65490

## Additional Information

---

<b>Gene ID</b>	12531
<b>Alias Symbol</b>	AI604853
<b>Other Names</b>	M-phase inducer phosphatase 2, 3.1.3.48, Dual specificity phosphatase Cdc25B, Cdc25b, Cdc25m2
<b>Format</b>	Liquid. Purified antibody supplied in 1x PBS buffer with 0.09% (w/v) sodium azide and 2% sucrose.
<b>Reconstitution &amp; Storage</b>	Add 50 ul of distilled water. Final anti-Cdc25b antibody concentration is 1 mg/ml in PBS buffer with 2% sucrose. For longer periods of storage, store at 20°C. Avoid repeat freeze-thaw cycles.
<b>Precautions</b>	Cdc25b Antibody - middle region is for research use only and not for use in diagnostic or therapeutic procedures.

## Protein Information

---

<b>Name</b>	Cdc25b
<b>Synonyms</b>	Cdc25m2
<b>Function</b>	Tyrosine protein phosphatase which functions as a dosage- dependent inducer of mitotic progression. Directly dephosphorylates CDK1 and stimulates its kinase activity. Required for G2/M phases of the cell cycle progression and abscission during cytokinesis in a ECT2- dependent manner. The three isoforms seem to have a different level of activity.
<b>Cellular Location</b>	Cytoplasm, cytoskeleton, microtubule organizing center, centrosome {ECO:0000250 UniProtKB:P30305}. Cytoplasm, cytoskeleton, spindle pole

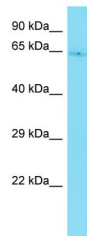
{ECO:0000250|UniProtKB:P30305}

## Tissue Location

Expressed predominantly in spleen, lung, heart, brain, intestine, and muscle.

## Images

---



Host: Rabbit

Target Name: Cdc25b

Sample Tissue: Mouse Heart lysates

Antibody Dilution: 1.0µg/ml

Please note: All products are 'FOR RESEARCH USE ONLY. NOT FOR USE IN DIAGNOSTIC OR THERAPEUTIC PROCEDURES'.