

MSH4 antibody - middle region

Rabbit Polyclonal Antibody

Catalog # AI11877

Product Information

Application	WB
Primary Accession	O15457
Other Accession	NM_002440 , NP_002431
Reactivity	Human, Mouse, Rat, Rabbit, Zebrafish, Pig, Dog, Horse, Bovine
Predicted	Mouse, Rat, Rabbit, Chicken, Horse, Bovine
Host	Rabbit
Clonality	Polyclonal
Calculated MW	104756

Additional Information

Gene ID	4438
Alias Symbol	RED2, ADAR3, MSH4
Other Names	MutS protein homolog 4, hMSH4, MSH4
Format	Liquid. Purified antibody supplied in 1x PBS buffer with 0.09% (w/v) sodium azide and 2% sucrose.
Reconstitution & Storage	Add 50 ul of distilled water. Final anti-MSH4 antibody concentration is 1 mg/ml in PBS buffer with 2% sucrose. For longer periods of storage, store at 20°C. Avoid repeat freeze-thaw cycles.
Precautions	MSH4 antibody - middle region is for research use only and not for use in diagnostic or therapeutic procedures.

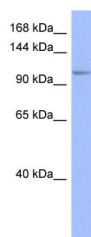
Protein Information

Name	MSH4
Function	Involved in meiotic recombination. Required for reciprocal recombination and proper segregation of homologous chromosomes at meiosis.
Cellular Location	Chromosome {ECO:0000250 UniProtKB:Q99MT2}.
Tissue Location	Highly expressed in testis (PubMed:33437391, PubMed:9299235). Also expressed in the ovary (PubMed:9299235)

References

Bethke,L., (2008) J. Natl. Cancer Inst. 100 (4), 270-276 Reconstitution and Storage:For short term use, store at 2-8C up to 1 week. For long term storage, store at -20C in small aliquots to prevent freeze-thaw cycles.

Images



WB Suggested Anti-MSH4 Antibody Titration: 0.2-1 µg/ml
ELISA Titer: 1:312500
Positive Control: Human Thymus

Please note: All products are 'FOR RESEARCH USE ONLY. NOT FOR USE IN DIAGNOSTIC OR THERAPEUTIC PROCEDURES'.