

# ASS antibody - N-terminal region

Rabbit Polyclonal Antibody

Catalog # AI11880

## Product Information

---

<b>Application</b>	WB, IHC
<b>Primary Accession</b>	<a href="#">P00966</a>
<b>Other Accession</b>	<a href="#">NM_054012</a> , <a href="#">NP_446464</a>
<b>Reactivity</b>	Human, Mouse, Rat, Zebrafish, Pig, Goat, Dog, Horse, Bovine, Yeast
<b>Predicted</b>	Human, Mouse, Pig, Bovine
<b>Host</b>	Rabbit
<b>Clonality</b>	Polyclonal
<b>Calculated MW</b>	46530

## Additional Information

---

<b>Gene ID</b>	445
<b>Alias Symbol</b>	ASS1, CTLN1, DKFZp434P0216, ASS
<b>Other Names</b>	Argininosuccinate synthase, 6.3.4.5, Citrulline--aspartate ligase, ASS1, ASS
<b>Format</b>	Liquid. Purified antibody supplied in 1x PBS buffer with 0.09% (w/v) sodium azide and 2% sucrose.
<b>Reconstitution &amp; Storage</b>	Add 100 ul of distilled water. Final anti-ASS antibody concentration is 1 mg/ml in PBS buffer with 2% sucrose. For longer periods of storage, store at 20°C. Avoid repeat freeze-thaw cycles.
<b>Precautions</b>	ASS antibody - N-terminal region is for research use only and not for use in diagnostic or therapeutic procedures.

## Protein Information

---

<b>Name</b>	ASS1 ( <a href="#">HGNC:758</a> )
<b>Function</b>	One of the enzymes of the urea cycle, the metabolic pathway transforming neurotoxic ammonia produced by protein catabolism into innocuous urea in the liver of ureotelic animals. Catalyzes the formation of argininosuccinate from aspartate, citrulline and ATP and together with ASL it is responsible for the biosynthesis of arginine in most body tissues.
<b>Cellular Location</b>	Cytoplasm, cytosol
<b>Tissue Location</b>	Expressed in adult liver.

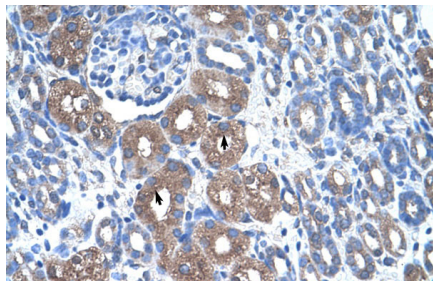
## References

---

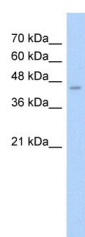
Hao,G., (2004) J. Biol. Chem. 279 (35), 36192-36200 Reconstitution and Storage:For short term use, store at 2-8C up to 1 week. For long term storage, store at -20C in small aliquots to prevent freeze-thaw cycles.

## Images

---



Rabbit Anti-ASS Antibody  
Paraffin Embedded Tissue: Human Kidney  
Cellular Data: Epithelial cells of renal tubule  
Antibody Concentration: 4.0-8.0 µg/ml  
Magnification: 400X



WB Suggested Anti-ASS Antibody Titration: 2.5µg/ml  
Positive Control: HepG2 cell lysate

Please note: All products are 'FOR RESEARCH USE ONLY. NOT FOR USE IN DIAGNOSTIC OR THERAPEUTIC PROCEDURES'.