

ASS antibody - C-terminal region

Rabbit Polyclonal Antibody

Catalog # AI11881

Product Information

Application	WB, IHC
Primary Accession	P00966
Other Accession	NM_054012 , NP_446464
Reactivity	Human, Mouse, Rat, Rabbit, Pig, Goat, Dog, Horse, Bovine
Predicted	Human, Mouse, Rat, Rabbit, Pig, Chicken, Bovine
Host	Rabbit
Clonality	Polyclonal
Calculated MW	46530

Additional Information

Gene ID	445
Alias Symbol	ASS1, CTLN1, DKFZp434P0216, ASS
Other Names	Argininosuccinate synthase, 6.3.4.5, Citrulline--aspartate ligase, ASS1, ASS
Format	Liquid. Purified antibody supplied in 1x PBS buffer with 0.09% (w/v) sodium azide and 2% sucrose.
Reconstitution & Storage	Add 100 ul of distilled water. Final anti-ASS antibody concentration is 1 mg/ml in PBS buffer with 2% sucrose. For longer periods of storage, store at 20°C. Avoid repeat freeze-thaw cycles.
Precautions	ASS antibody - C-terminal region is for research use only and not for use in diagnostic or therapeutic procedures.

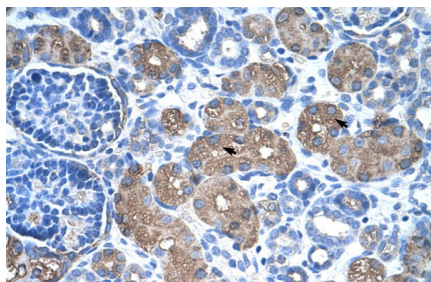
Protein Information

Name	ASS1 (HGNC:758)
Function	One of the enzymes of the urea cycle, the metabolic pathway transforming neurotoxic ammonia produced by protein catabolism into innocuous urea in the liver of ureotelic animals. Catalyzes the formation of argininosuccinate from aspartate, citrulline and ATP and together with ASL it is responsible for the biosynthesis of arginine in most body tissues.
Cellular Location	Cytoplasm, cytosol
Tissue Location	Expressed in adult liver.

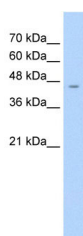
References

Hao,G., (2004) J. Biol. Chem. 279 (35), 36192-36200 Reconstitution and Storage:For short term use, store at 2-8C up to 1 week. For long term storage, store at -20C in small aliquots to prevent freeze-thaw cycles.Publications:Hu, Z. et al. Quantitative liver-specific protein fingerprint in blood: a signature for hepatotoxicity. Theranostics 4, 215-28 (2014). WB, Human, Dog, Pig, H, Rabbit, Rat, Guinea pig, Mouse, Bovine, Goat24465277

Images



Rabbit Anti-ASS Antibody
Paraffin Embedded Tissue: Human Kidney
Cellular Data: Epithelial cells of renal tubule
Antibody Concentration: 4.0-8.0 µg/ml
Magnification: 400X



WB Suggested Anti-ASS Antibody Titration: 2.5µg/ml
Positive Control: HepG2 cell lysate

Please note: All products are 'FOR RESEARCH USE ONLY. NOT FOR USE IN DIAGNOSTIC OR THERAPEUTIC PROCEDURES'.