

# DDC antibody - N-terminal region

Rabbit Polyclonal Antibody

Catalog # AI11891

## Product Information

<b>Application</b>	WB, IHC
<b>Primary Accession</b>	<a href="#">P20711</a>
<b>Other Accession</b>	<a href="#">NM_000790</a> , <a href="#">NP_000781</a>
<b>Reactivity</b>	Human, Mouse, Rat, Rabbit, Zebrafish, Bovine, Horse, Dog
<b>Predicted</b>	Human, Mouse, Rat, Rabbit, Zebrafish, Pig, Chicken, Bovine
<b>Host</b>	Rabbit
<b>Clonality</b>	Polyclonal
<b>Calculated MW</b>	53926

## Additional Information

<b>Gene ID</b>	1644
<b>Alias Symbol</b>	AADC
<b>Other Names</b>	Aromatic-L-amino-acid decarboxylase, AADC, 4.1.1.28, DOPA decarboxylase, DDC, DDC, AADC
<b>Format</b>	Liquid. Purified antibody supplied in 1x PBS buffer with 0.09% (w/v) sodium azide and 2% sucrose.
<b>Reconstitution &amp; Storage</b>	Add 100 ul of distilled water. Final anti-DDC antibody concentration is 1 mg/ml in PBS buffer with 2% sucrose. For longer periods of storage, store at 20°C. Avoid repeat freeze-thaw cycles.
<b>Precautions</b>	DDC antibody - N-terminal region is for research use only and not for use in diagnostic or therapeutic procedures.

## Protein Information

<b>Name</b>	DDC {ECO:0000303   PubMed:15532536, ECO:0000312   HGNC:HGNC:2719}
<b>Function</b>	Catalyzes the decarboxylation of L-3,4-dihydroxyphenylalanine (DOPA) to dopamine and L-5-hydroxytryptophan to serotonin.
<b>Tissue Location</b>	[Isoform 2]: High expression in kidney.

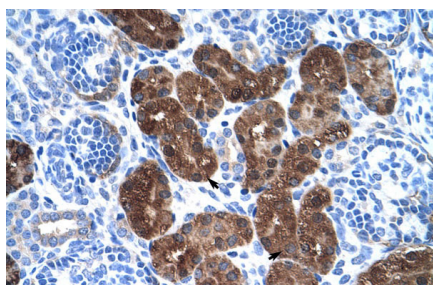
## References

Ma,J.Z., (2005) Hum. Mol. Genet. 14 (12), 1691-1698 Reconstitution and Storage:For short term use, store at

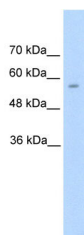
2-8C up to 1 week. For long term storage, store at -20C in small aliquots to prevent freeze-thaw cycles.

## Images

---



Rabbit Anti-DDC Antibody  
Paraffin Embedded Tissue: Human Kidney  
Cellular Data: Epithelial cells of renal tubule  
Antibody Concentration: 4.0-8.0  $\mu\text{g/ml}$   
Magnification: 400X



WB Suggested Anti-DDC Antibody Titration: 5.0  $\mu\text{g/ml}$   
Positive Control: HepG2 cell lysate  
DDC is supported by BioGPS gene expression data to be expressed in HepG2

Please note: All products are 'FOR RESEARCH USE ONLY. NOT FOR USE IN DIAGNOSTIC OR THERAPEUTIC PROCEDURES'.