

FN1 antibody - N-terminal region

Rabbit Polyclonal Antibody

Catalog # AI11901

Product Information

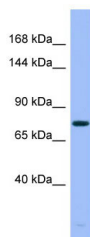
Application	WB
Primary Accession	Q564H7
Other Accession	NM_054034 , NP_473375
Reactivity	Human, Mouse, Rat, Rabbit, Zebrafish, Pig, Dog, Horse, Bovine
Predicted	Human, Mouse, Pig, Chicken
Host	Rabbit
Clonality	Polyclonal
Calculated MW	71 kDa

Additional Information

Alias Symbol	CIG, DKFZp686F10164, DKFZp686H0342, DKFZp686I1370, DKFZp686O13149, FINC, FN, LETS, MSF, FNZ, ED-B, GFND, GFND2
Format	Liquid. Purified antibody supplied in 1x PBS buffer with 0.09% (w/v) sodium azide and 2% sucrose.
Reconstitution & Storage	Add 50 ul of distilled water. Final anti-FN1 antibody concentration is 1 mg/ml in PBS buffer with 2% sucrose. For longer periods of storage, store at 20°C. Avoid repeat freeze-thaw cycles.
Precautions	FN1 antibody - N-terminal region is for research use only and not for use in diagnostic or therapeutic procedures.

Protein Information

Images



WB Suggested Anti-FN1 Antibody Titration: 0.2-1 µg/ml
ELISA Titer: 1:62500
Positive Control: Human Thymus