

FTCD antibody - N-terminal region

Rabbit Polyclonal Antibody

Catalog # AI11911

Product Information

Application	WB, IHC
Primary Accession	O95954
Other Accession	NM_006657 , NP_006648
Reactivity	Human, Mouse, Rat, Rabbit, Zebrafish, Dog, Horse, Bovine
Predicted	Human, Mouse, Rat, Rabbit, Zebrafish, Pig, Chicken, Bovine
Host	Rabbit
Clonality	Polyclonal
Calculated MW	58927

Additional Information

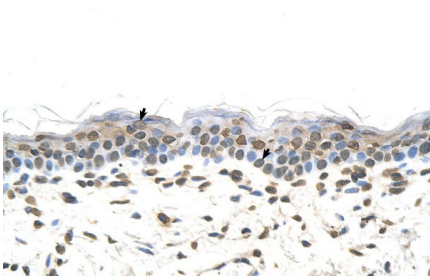
Gene ID	10841
Alias Symbol	LCHC1
Other Names	Formimidoyltransferase-cyclodeaminase, Formiminotransferase-cyclodeaminase, FTCD, LCHC1, Glutamate formimidoyltransferase, 2.1.2.5, Glutamate formiminotransferase, Glutamate formyltransferase, Formimidoyltetrahydrofolate cyclodeaminase, 4.3.1.4, Formiminotetrahydrofolate cyclodeaminase, FTCD
Format	Liquid. Purified antibody supplied in 1x PBS buffer with 0.09% (w/v) sodium azide and 2% sucrose.
Reconstitution & Storage	Add 100 ul of distilled water. Final anti-FTCD antibody concentration is 1 mg/ml in PBS buffer with 2% sucrose. For longer periods of storage, store at 20°C. Avoid repeat freeze-thaw cycles.
Precautions	FTCD antibody - N-terminal region is for research use only and not for use in diagnostic or therapeutic procedures.

Protein Information

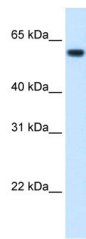
Name	FTCD
Function	Folate-dependent enzyme, that displays both transferase and deaminase activity. Serves to channel one-carbon units from formiminoglutamate to the folate pool.
Cellular Location	Cytoplasm, cytosol {ECO:0000250 UniProtKB:Q9YH58}. Golgi apparatus {ECO:0000250 UniProtKB:Q9YH58}. Cytoplasm, cytoskeleton, microtubule organizing center, centrosome, centriole Note=More abundantly located

around the mother centriole

Images



Rabbit Anti-FTCD Antibody
Paraffin Embedded Tissue: Human Skin
Cellular Data: Squamous epithelial cells
Antibody Concentration: 4.0-8.0 µg/ml
Magnification: 400X



WB Suggested Anti-FTCD Antibody Titration: 1.25µg/ml
Positive Control: Fetal liver cell lysate

Please note: All products are 'FOR RESEARCH USE ONLY. NOT FOR USE IN DIAGNOSTIC OR THERAPEUTIC PROCEDURES'.