

Pcdh10 antibody - C-terminal region

Rabbit Polyclonal Antibody

Catalog # AI11918

Product Information

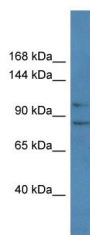
Application	WB
Primary Accession	E9PXQ7
Other Accession	NM_001098170 , NP_001091640
Reactivity	Human, Mouse, Rat, Rabbit, Zebrafish, Dog, Bovine
Predicted	Mouse, Rat, Rabbit, Zebrafish, Chicken, Bovine
Host	Rabbit
Clonality	Polyclonal
Calculated MW	115 kDa

Additional Information

Alias Symbol	6430521D13Rik, 6430703F07Rik, OL-pc, mKIAA1400
Format	Liquid. Purified antibody supplied in 1x PBS buffer with 0.09% (w/v) sodium azide and 2% sucrose.
Reconstitution & Storage	Add 50 ul of distilled water. Final anti-Pcdh10 antibody concentration is 1 mg/ml in PBS buffer with 2% sucrose. For longer periods of storage, store at 20°C. Avoid repeat freeze-thaw cycles.
Precautions	Pcdh10 antibody - C-terminal region is for research use only and not for use in diagnostic or therapeutic procedures.

Protein Information

Images



WB Suggested Anti-Pcdh10 Antibody Titration: 1.0 µg/ml
Positive Control: Mouse Pancreas