

# AGER antibody - C-terminal region

Rabbit Polyclonal Antibody

Catalog # AI11920

## Product Information

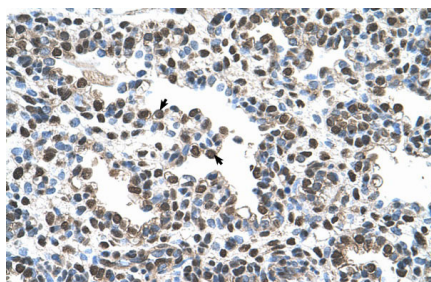
Application	WB, IHC
Primary Accession	<a href="#">A2BFI7</a>
Other Accession	<a href="#">NM_172197</a> , <a href="#">NP_751947</a>
Reactivity	Human
Predicted	Human
Host	Rabbit
Clonality	Polyclonal
Calculated MW	38 KDa

## Additional Information

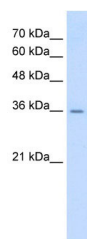
Alias Symbol	MGC22357, RAGE
Target/Specificity	Isoform 2 specific
Format	Liquid. Purified antibody supplied in 1x PBS buffer with 0.09% (w/v) sodium azide and 2% sucrose.
Reconstitution & Storage	Add 50 ul of distilled water. Final anti-AGER antibody concentration is 1 mg/ml in PBS buffer with 2% sucrose. For longer periods of storage, store at 20°C. Avoid repeat freeze-thaw cycles.
Precautions	AGER antibody - C-terminal region is for research use only and not for use in diagnostic or therapeutic procedures.

## Protein Information

## Images



Rabbit Anti-AGER Antibody  
Paraffin Embedded Tissue: Human Lung  
Cellular Data: Alveolar cells  
Antibody Concentration: 4.0-8.0 µg/ml  
Magnification: 400X



WB Suggested Anti-AGER Antibody Titration: 0.2-1  $\mu$ g/ml  
Positive Control: HepG2 cell lysate

Please note: All products are 'FOR RESEARCH USE ONLY. NOT FOR USE IN DIAGNOSTIC OR THERAPEUTIC PROCEDURES'.