

AGER antibody - C-terminal region

Rabbit Polyclonal Antibody

Catalog # AI11921

Product Information

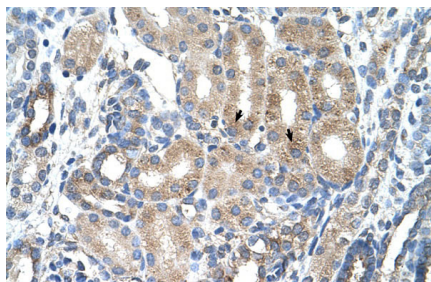
Application	WB, IHC
Primary Accession	A2BFI7
Other Accession	NM_172197 , NP_751947
Reactivity	Human
Predicted	Human
Host	Rabbit
Clonality	Polyclonal
Calculated MW	38 kDa

Additional Information

Alias Symbol	MGC22357, RAGE
Format	Liquid. Purified antibody supplied in 1x PBS buffer with 0.09% (w/v) sodium azide and 2% sucrose.
Reconstitution & Storage	Add 100 μ l of distilled water. Final anti-AGER antibody concentration is 1 mg/ml in PBS buffer with 2% sucrose. For longer periods of storage, store at 20°C. Avoid repeat freeze-thaw cycles.
Precautions	AGER antibody - C-terminal region is for research use only and not for use in diagnostic or therapeutic procedures.

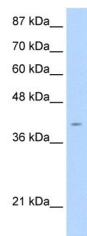
Protein Information

Images

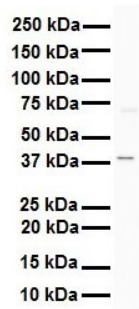


Rabbit Anti-AGER Antibody
Paraffin Embedded Tissue: Human Kidney
Cellular Data: Epithelial cells of renal tubule
Antibody Concentration: 4.0-8.0 μ g/ml
Magnification: 400X

WB Suggested Anti-AGER Antibody Titration: 2.5 μ g/ml
Positive Control: Jurkat cell lysate



AGER is supported by BioGPS gene expression data to be expressed in Jurkat



WB Suggested Anti-AGER antibody Titration: 1 µg/ml
Sample Type: Human K562

Please note: All products are 'FOR RESEARCH USE ONLY. NOT FOR USE IN DIAGNOSTIC OR THERAPEUTIC PROCEDURES'.