

# ALAD antibody - middle region

Rabbit Polyclonal Antibody

Catalog # AI11924

## Product Information

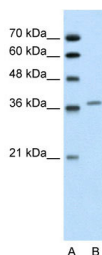
<b>Application</b>	WB
<b>Primary Accession</b>	<a href="#">Q6ZMU0</a>
<b>Other Accession</b>	<a href="#">NM_001003945</a> , <a href="#">NP_001003945</a>
<b>Reactivity</b>	Human, Mouse, Rat, Rabbit, Zebrafish, Dog, Horse, Bovine, Yeast
<b>Predicted</b>	Human, Zebrafish, Bovine
<b>Host</b>	Rabbit
<b>Clonality</b>	Polyclonal
<b>Calculated MW</b>	39 KDa

## Additional Information

<b>Alias Symbol</b>	ALADH, MGC5057, PBGS
<b>Format</b>	Liquid. Purified antibody supplied in 1x PBS buffer with 0.09% (w/v) sodium azide and 2% sucrose.
<b>Reconstitution &amp; Storage</b>	Add 50 ul of distilled water. Final anti-ALAD antibody concentration is 1 mg/ml in PBS buffer with 2% sucrose. For longer periods of storage, store at 20°C. Avoid repeat freeze-thaw cycles.
<b>Precautions</b>	ALAD antibody - middle region is for research use only and not for use in diagnostic or therapeutic procedures.

## Protein Information

## Images



WB Suggested Anti-ALAD Antibody Titration: 0.2-1 µg/ml  
Positive Control: Jurkat cell lysate  
ALAD is supported by BioGPS gene expression data to be expressed in Jurkat