

# FECH antibody - N-terminal region

Rabbit Polyclonal Antibody

Catalog # AI11927

## Product Information

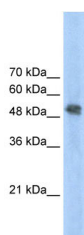
<b>Application</b>	WB
<b>Primary Accession</b>	<a href="#">Q8NANO</a>
<b>Other Accession</b>	<a href="#">NM_001012515</a> , <a href="#">NP_001012533</a>
<b>Reactivity</b>	Human, Mouse, Rat, Rabbit, Zebrafish, Pig, Dog, Horse, Bovine, Yeast
<b>Predicted</b>	Mouse, Rat, Rabbit, Pig
<b>Host</b>	Rabbit
<b>Clonality</b>	Polyclonal
<b>Calculated MW</b>	47 kDa

## Additional Information

<b>Alias Symbol</b>	EPP, FCE
<b>Format</b>	Liquid. Purified antibody supplied in 1x PBS buffer with 0.09% (w/v) sodium azide and 2% sucrose.
<b>Reconstitution &amp; Storage</b>	Add 100 ul of distilled water. Final anti-FECH antibody concentration is 1 mg/ml in PBS buffer with 2% sucrose. For longer periods of storage, store at 20°C. Avoid repeat freeze-thaw cycles.
<b>Precautions</b>	FECH antibody - N-terminal region is for research use only and not for use in diagnostic or therapeutic procedures.

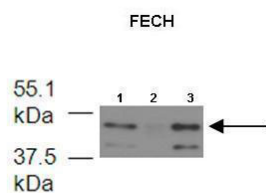
## Protein Information

## Images



WB Suggested Anti-FECH Antibody Titration: 2.5µg/ml  
Positive Control: Jurkat cell lysate  
FECH is strongly supported by BioGPS gene expression data to be expressed in Human Jurkat cells

Lanes: 1. 6 ug mouse brain mitochondria extract 2. 6 ug mouse brain mitochondria extract 3. 6 ug mouse brain mitochondria extract



Primary Antibody Dilution: 1:500  
Secondary Antibody: Anti-rabbit HRP  
Secondary Antibody Dilution: 1:3000  
Gene Name: FECH  
Submitted by: Dr. Hao Zhu, University of Kansas Medical Center

See Immunoblot 2 Data and Customer Feedback for more information

Please note: All products are 'FOR RESEARCH USE ONLY. NOT FOR USE IN DIAGNOSTIC OR THERAPEUTIC PROCEDURES'.