

# EPX antibody - middle region

Rabbit Polyclonal Antibody

Catalog # AI11935

## Product Information

---

<b>Application</b>	WB
<b>Primary Accession</b>	<a href="#">P11678</a>
<b>Other Accession</b>	<a href="#">NM_000502</a> , <a href="#">NP_000493</a>
<b>Reactivity</b>	Human, Mouse, Rat, Rabbit, Pig, Horse
<b>Predicted</b>	Mouse, Rat, Rabbit, Pig, Dog, Horse
<b>Host</b>	Rabbit
<b>Clonality</b>	Polyclonal
<b>Calculated MW</b>	81040

## Additional Information

---

<b>Gene ID</b>	8288
<b>Alias Symbol</b>	EPO, EPP, EPX-PEN
<b>Other Names</b>	Eosinophil peroxidase, EPO, 1.11.1.7, Eosinophil peroxidase light chain, Eosinophil peroxidase heavy chain, EPX, EPER, EPO, EPP
<b>Format</b>	Liquid. Purified antibody supplied in 1x PBS buffer with 0.09% (w/v) sodium azide and 2% sucrose.
<b>Reconstitution &amp; Storage</b>	Add 50 ul of distilled water. Final anti-EPX antibody concentration is 1 mg/ml in PBS buffer with 2% sucrose. For longer periods of storage, store at 20°C. Avoid repeat freeze-thaw cycles.
<b>Precautions</b>	EPX antibody - middle region is for research use only and not for use in diagnostic or therapeutic procedures.

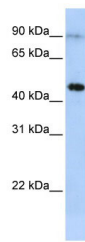
## Protein Information

---

<b>Name</b>	EPX
<b>Synonyms</b>	EPER, EPO, EPP
<b>Function</b>	Mediates tyrosine nitration of secondary granule proteins in mature resting eosinophils. Shows significant inhibitory activity towards Mycobacterium tuberculosis H37Rv by inducing bacterial fragmentation and lysis.
<b>Cellular Location</b>	Cytoplasmic granule. Note=Cytoplasmic granules of eosinophils

## Images

---



WB Suggested Anti-EPX Antibody Titration: 0.2-1  $\mu\text{g/ml}$   
ELISA Titer: 1:62500  
Positive Control: MCF7 cell lysate

Please note: All products are 'FOR RESEARCH USE ONLY. NOT FOR USE IN DIAGNOSTIC OR THERAPEUTIC PROCEDURES'.