

# F2 antibody - N-terminal region

Rabbit Polyclonal Antibody

Catalog # AI11936

## Product Information

---

<b>Application</b>	WB
<b>Primary Accession</b>	<a href="#">P18292</a>
<b>Other Accession</b>	<a href="#">NM_022924</a> , <a href="#">NP_075213</a>
<b>Reactivity</b>	Human, Mouse, Rat, Rabbit, Pig, Dog, Horse, Bovine, Sheep
<b>Predicted</b>	Human, Mouse, Rat, Dog, Sheep
<b>Host</b>	Rabbit
<b>Clonality</b>	Polyclonal
<b>Calculated MW</b>	70412

## Additional Information

---

<b>Alias Symbol</b>	F2
<b>Other Names</b>	Prothrombin, 3.4.21.5, Coagulation factor II, Activation peptide fragment 1, Activation peptide fragment 2, Thrombin light chain, Thrombin heavy chain, F2
<b>Format</b>	Liquid. Purified antibody supplied in 1x PBS buffer with 0.09% (w/v) sodium azide and 2% sucrose.
<b>Reconstitution &amp; Storage</b>	Add 50 ul of distilled water. Final anti-F2 antibody concentration is 1 mg/ml in PBS buffer with 2% sucrose. For longer periods of storage, store at 20°C. Avoid repeat freeze-thaw cycles.
<b>Precautions</b>	F2 antibody - N-terminal region is for research use only and not for use in diagnostic or therapeutic procedures.

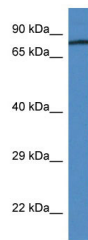
## Protein Information

---

<b>Name</b>	F2
<b>Function</b>	Thrombin, which cleaves bonds after Arg and Lys, converts fibrinogen to fibrin and activates factors V, VII, VIII, XIII, and, in complex with thrombomodulin, protein C. Functions in blood homeostasis, inflammation and wound healing. Activates coagulation factor XI (F11); activation is promoted by the contact with negatively charged surfaces (By similarity). Triggers the production of pro-inflammatory cytokines, such as MCP-1/CCL2 and IL8/CXCL8, in endothelial cells (By similarity).

## Images

---



WB Suggested Anti-F2 Antibody Titration: 1.0 µg/ml  
Positive Control: Rat Lung

Please note: All products are 'FOR RESEARCH USE ONLY. NOT FOR USE IN DIAGNOSTIC OR THERAPEUTIC PROCEDURES'.