

Otc antibody - C-terminal region

Rabbit Polyclonal Antibody

Catalog # AI11940

Product Information

Application	WB
Primary Accession	P11725
Other Accession	NM_008769 , NP_032795
Reactivity	Human, Mouse, Rat, Rabbit, Zebrafish, Pig, Goat, Dog, Horse, Bovine, Sheep, Yeast
Predicted	Human, Mouse, Rat, Rabbit, Zebrafish, Pig, Chicken, Dog, Horse, Bovine, Sheep
Host	Rabbit
Clonality	Polyclonal
Calculated MW	39765

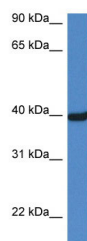
Additional Information

Gene ID	18416
Alias Symbol	AI265390, Sf, spf
Other Names	Ornithine carbamoyltransferase, mitochondrial, 2.1.3.3, Ornithine transcarbamylase, OTCase, Otc
Format	Liquid. Purified antibody supplied in 1x PBS buffer with 0.09% (w/v) sodium azide and 2% sucrose.
Reconstitution & Storage	Add 50 ul of distilled water. Final anti-Otc antibody concentration is 1 mg/ml in PBS buffer with 2% sucrose. For longer periods of storage, store at 20°C. Avoid repeat freeze-thaw cycles.
Precautions	Otc antibody - C-terminal region is for research use only and not for use in diagnostic or therapeutic procedures.

Protein Information

Name	Otc {ECO:0000312 MGI:MGI:97448}
Function	Catalyzes the second step of the urea cycle, the condensation of carbamoyl phosphate with L-ornithine to form L-citrulline. The urea cycle ensures the detoxification of ammonia by converting it to urea for excretion.
Cellular Location	Mitochondrion matrix {ECO:0000250 UniProtKB:P00480}

Images



WB Suggested Anti-Otc Antibody Titration: 1.0 µg/ml
Positive Control: Mouse Liver

Please note: All products are 'FOR RESEARCH USE ONLY. NOT FOR USE IN DIAGNOSTIC OR THERAPEUTIC PROCEDURES'.