

# NPY Antibody - middle region

Rabbit Polyclonal Antibody

Catalog # AI11945

## Product Information

---

<b>Application</b>	WB
<b>Primary Accession</b>	<a href="#">P01303</a>
<b>Other Accession</b>	<a href="#">NM_000905</a> , <a href="#">NP_000896</a>
<b>Reactivity</b>	Human, Mouse, Rat, Rabbit, Zebrafish, Pig, Dog, Horse, Bovine, Sheep
<b>Predicted</b>	Human, Mouse, Rat, Rabbit, Zebrafish, Pig, Bovine, Sheep
<b>Host</b>	Rabbit
<b>Clonality</b>	Polyclonal
<b>Calculated MW</b>	10851

## Additional Information

---

<b>Gene ID</b>	4852
<b>Alias Symbol</b>	PYY4
<b>Other Names</b>	Pro-neuropeptide Y, Neuropeptide Y, Neuropeptide tyrosine, NPY, C-flanking peptide of NPY, CPON, NPY
<b>Format</b>	Liquid. Purified antibody supplied in 1x PBS buffer with 0.09% (w/v) sodium azide and 2% sucrose.
<b>Reconstitution &amp; Storage</b>	Add 50 µl of distilled water. Final Anti-NPY antibody concentration is 1 mg/ml in PBS buffer with 2% sucrose. For longer periods of storage, store at -20°C. Avoid repeat freeze-thaw cycles.
<b>Precautions</b>	NPY Antibody - middle region is for research use only and not for use in diagnostic or therapeutic procedures.

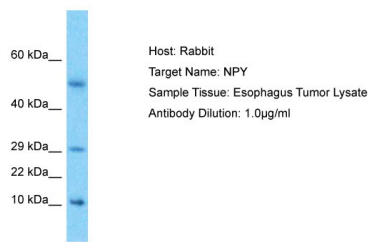
## Protein Information

---

<b>Name</b>	NPY
<b>Function</b>	NPY is implicated in the control of feeding and in secretion of gonadotrophin-release hormone.
<b>Cellular Location</b>	Secreted. Cytoplasmic vesicle, secretory vesicle, neuronal dense core vesicle {ECO:0000250 UniProtKB:P07808}
<b>Tissue Location</b>	One of the most abundant peptides in the nervous system. Also found in some chromaffin cells of the adrenal medulla

# Images

---



Host: Rabbit  
Target Name: NPY  
Sample Tissue: Esophagus Tumor Lysate  
Antibody Dilution: 1.0µg/ml

Host: Rabbit  
Target Name: NPY  
Sample Tissue: Esophagus Tumor lysates  
Antibody Dilution: 1.0µg/ml

Please note: All products are 'FOR RESEARCH USE ONLY. NOT FOR USE IN DIAGNOSTIC OR THERAPEUTIC PROCEDURES'.