

# GHRHR antibody - C-terminal region

Rabbit Polyclonal Antibody

Catalog # AI11950

## Product Information

---

<b>Application</b>	WB
<b>Primary Accession</b>	<a href="#">Q02643</a>
<b>Other Accession</b>	<a href="#">NM_001009824</a> , <a href="#">NP_001009824</a>
<b>Reactivity</b>	Human, Mouse, Rat, Rabbit, Pig, Dog, Horse, Bovine, Sheep
<b>Predicted</b>	Human, Mouse, Rabbit, Pig, Dog, Bovine, Sheep
<b>Host</b>	Rabbit
<b>Clonality</b>	Polyclonal
<b>Calculated MW</b>	47402

## Additional Information

---

<b>Gene ID</b>	2692
<b>Alias Symbol</b>	GHRFR, GHRHRpsv, GRFR, IGHD1B
<b>Other Names</b>	Growth hormone-releasing hormone receptor, GHRH receptor, Growth hormone-releasing factor receptor, GRF receptor, GRFR, GHRHR
<b>Format</b>	Liquid. Purified antibody supplied in 1x PBS buffer with 0.09% (w/v) sodium azide and 2% sucrose.
<b>Reconstitution &amp; Storage</b>	Add 50 ul of distilled water. Final anti-GHRHR antibody concentration is 1 mg/ml in PBS buffer with 2% sucrose. For longer periods of storage, store at 20°C. Avoid repeat freeze-thaw cycles.
<b>Precautions</b>	GHRHR antibody - C-terminal region is for research use only and not for use in diagnostic or therapeutic procedures.

## Protein Information

---

<b>Name</b>	GHRHR
<b>Function</b>	Receptor for GRF, coupled to G proteins which activate adenylyl cyclase. Stimulates somatotroph cell growth, growth hormone gene transcription and growth hormone secretion.
<b>Cellular Location</b>	Cell membrane; Multi-pass membrane protein.
<b>Tissue Location</b>	Pituitary gland.

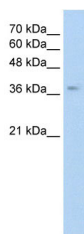
## References

---

Gallego,R., (2005) Histo. Histopathol. 20 (3), 697-706  
Reconstitution and Storage:For short term use, store at 2-8C up to 1 week. For long term storage, store at -20C in small aliquots to prevent freeze-thaw cycles.

## Images

---



WB Suggested Anti-GHRHR Antibody Titration: 0.2-1  
µg/ml

Positive Control: Jurkat cell lysate

There is BioGPS gene expression data showing that  
GHRHR is expressed in Jurkat

Please note: All products are 'FOR RESEARCH USE ONLY. NOT FOR USE IN DIAGNOSTIC OR THERAPEUTIC PROCEDURES'.