

FECH antibody - N-terminal region

Rabbit Polyclonal Antibody

Catalog # AI11951

Product Information

Application	WB, IHC
Primary Accession	Q8NANO
Other Accession	NM_001012515 , NP_001012533
Reactivity	Human, Rat
Predicted	Rabbit
Host	Rabbit
Clonality	Polyclonal
Calculated MW	47 KDa

Additional Information

Alias Symbol	EPP, FCE
Format	Liquid. Purified antibody supplied in 1x PBS buffer with 0.09% (w/v) sodium azide and 2% sucrose.
Reconstitution & Storage	Add 50 ul of distilled water. Final anti-FECH antibody concentration is 1 mg/ml in PBS buffer with 2% sucrose. For longer periods of storage, store at 20°C. Avoid repeat freeze-thaw cycles.
Precautions	FECH antibody - N-terminal region is for research use only and not for use in diagnostic or therapeutic procedures.

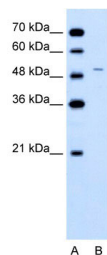
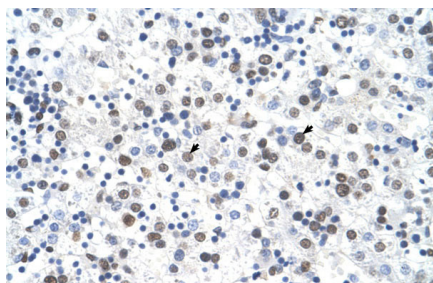
Protein Information

References

Collin,C., (2005) Blood 106 (3), 1098-1104
Reconstitution and Storage:For short term use, store at 2-8C up to 1 week. For long term storage, store at -20C in small aliquots to prevent freeze-thaw cycles.

Images

Rabbit Anti-FECH Antibody
Paraffin Embedded Tissue: Human Liver
Cellular Data: Hepatocytes
Antibody Concentration: 4.0-8.0 µg/ml
Magnification: 400X



WB Suggested Anti-FECH Antibody Titration: 0.2-1 $\mu\text{g/ml}$
 Positive Control: Jurkat cell lysate
 FECH is strongly supported by BioGPS gene expression data to be expressed in Human Jurkat cells

Please note: All products are 'FOR RESEARCH USE ONLY. NOT FOR USE IN DIAGNOSTIC OR THERAPEUTIC PROCEDURES'.