

RHOBTB1 antibody - middle region

Rabbit Polyclonal Antibody

Catalog # AI11955

Product Information

Application	WB, IHC
Primary Accession	O94844
Other Accession	NM_014836 , NP_055651
Reactivity	Human, Mouse, Rat, Rabbit, Zebrafish, Goat, Dog, Horse, Bovine, Sheep
Predicted	Mouse, Pig, Goat, Dog, Horse, Bovine
Host	Rabbit
Clonality	Polyclonal
Calculated MW	79417

Additional Information

Gene ID	9886
Alias Symbol	KIAA0740, MGC33059, MGC33841
Other Names	Rho-related BTB domain-containing protein 1, RHOBTB1, KIAA0740
Format	Liquid. Purified antibody supplied in 1x PBS buffer with 0.09% (w/v) sodium azide and 2% sucrose.
Reconstitution & Storage	Add 50 ul of distilled water. Final anti-RHOBTB1 antibody concentration is 1 mg/ml in PBS buffer with 2% sucrose. For longer periods of storage, store at 20°C. Avoid repeat freeze-thaw cycles.
Precautions	RHOBTB1 antibody - middle region is for research use only and not for use in diagnostic or therapeutic procedures.

Protein Information

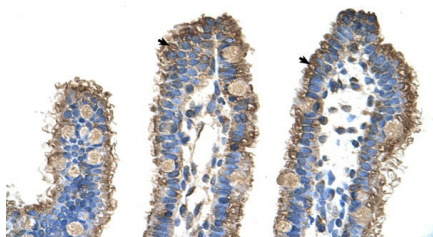
Name	RHOBTB1
Synonyms	KIAA0740
Tissue Location	Ubiquitous, with highest levels in skeletal muscle, placenta, testis, stomach, and kidney, followed by uterus and adrenal gland. Expressed in a variety of fetal tissues

References

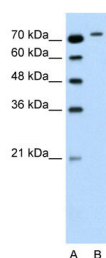
Beder, L.B., (2006) J. Cancer Res. Clin. Oncol. 132 (1), 19-27
Reconstitution and Storage: For short term use,

store at 2-8C up to 1 week. For long term storage, store at -20C in small aliquots to prevent freeze-thaw cycles.

Images



Rabbit Anti-RHOBTB1 Antibody
Paraffin Embedded Tissue: Human Intestine
Cellular Data: Epithelial cells of intestinal villas
Antibody Concentration: 4.0-8.0 µg/ml
Magnification: 400X



WB Suggested Anti-RHOBTB1 Antibody Titration: 0.2-1 µg/ml
Positive Control: Jurkat cell lysate

Please note: All products are 'FOR RESEARCH USE ONLY. NOT FOR USE IN DIAGNOSTIC OR THERAPEUTIC PROCEDURES'.