

SLC6A2 antibody - middle region

Rabbit Polyclonal Antibody

Catalog # AI11956

Product Information

Application	WB
Primary Accession	O55192
Other Accession	NM_001043 , NP_001034
Reactivity	Human, Mouse, Rat, Rabbit, Pig, Dog, Horse, Bovine
Predicted	Human, Mouse, Dog, Horse, Bovine
Host	Rabbit
Clonality	Polyclonal
Calculated MW	69255

Additional Information

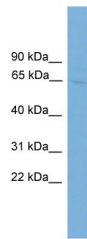
Gene ID	20538
Alias Symbol	NAT1, NET, NET1, SLC6A5
Other Names	Sodium-dependent noradrenaline transporter, Norepinephrine transporter, NET, Solute carrier family 6 member 2, Slc6a2
Format	Liquid. Purified antibody supplied in 1x PBS buffer with 0.09% (w/v) sodium azide and 2% sucrose.
Reconstitution & Storage	Add 50 ul of distilled water. Final anti-SLC6A2 antibody concentration is 1 mg/ml in PBS buffer with 2% sucrose. For longer periods of storage, store at 20°C. Avoid repeat freeze-thaw cycles.
Precautions	SLC6A2 antibody - middle region is for research use only and not for use in diagnostic or therapeutic procedures.

Protein Information

Name	Slc6a2 {ECO:0000312 MGI:MGI:1270850}
Function	Mediates sodium- and chloride-dependent transport of norepinephrine (also known as noradrenaline), the primary signaling neurotransmitter in the autonomic sympathetic nervous system (PubMed: 16269905 , PubMed: 23580201). Is responsible for norepinephrine reuptake and clearance from the synaptic cleft, thus playing a crucial role in norepinephrine inactivation and homeostasis (PubMed: 10769386 , PubMed: 23580201). Can also mediate sodium- and chloride-dependent transport of dopamine (By similarity).
Cellular Location	Cell membrane {ECO:0000250 UniProtKB:P23975}; Multi-pass membrane

protein. Cell projection, axon. Synapse, synaptosome

Images



WB Suggested Anti-SLC6A2 Antibody Titration: 0.2-1
µg/ml
ELISA Titer: 1:312500
Positive Control: HepG2 cell lysate

Please note: All products are 'FOR RESEARCH USE ONLY. NOT FOR USE IN DIAGNOSTIC OR THERAPEUTIC PROCEDURES'.