

SLC6A2 antibody - middle region

Rabbit Polyclonal Antibody

Catalog # AI11957

Product Information

Application	WB
Primary Accession	P23975
Other Accession	NM_001043 , NP_001034
Reactivity	Human, Mouse, Rat, Rabbit, Dog, Horse, Bovine
Predicted	Human, Mouse, Rat, Chicken, Bovine
Host	Rabbit
Clonality	Polyclonal
Calculated MW	69332

Additional Information

Gene ID	6530
Alias Symbol	NAT1, NET, NET1, SLC6A5
Other Names	Sodium-dependent noradrenaline transporter, Norepinephrine transporter, NET, Solute carrier family 6 member 2, SLC6A2, NAT1, NET1, SLC6A5
Format	Liquid. Purified antibody supplied in 1x PBS buffer with 0.09% (w/v) sodium azide and 2% sucrose.
Reconstitution & Storage	Add 50 ul of distilled water. Final anti-SLC6A2 antibody concentration is 1 mg/ml in PBS buffer with 2% sucrose. For longer periods of storage, store at 20°C. Avoid repeat freeze-thaw cycles.
Precautions	SLC6A2 antibody - middle region is for research use only and not for use in diagnostic or therapeutic procedures.

Protein Information

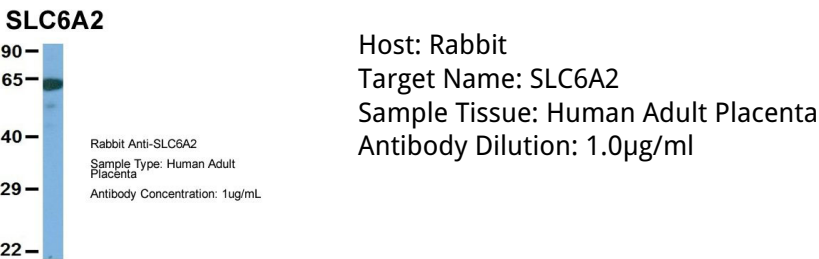
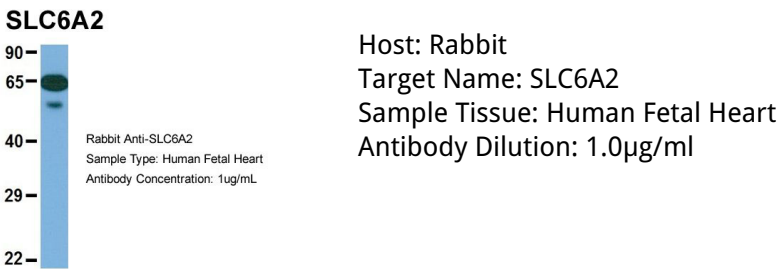
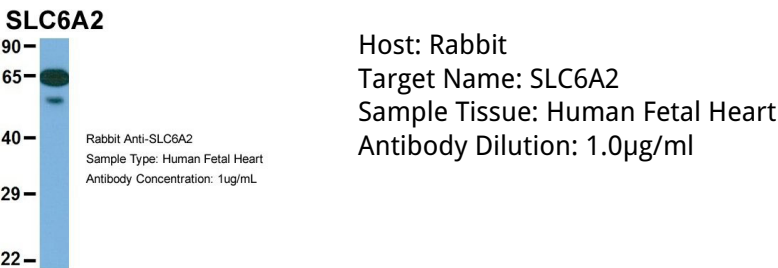
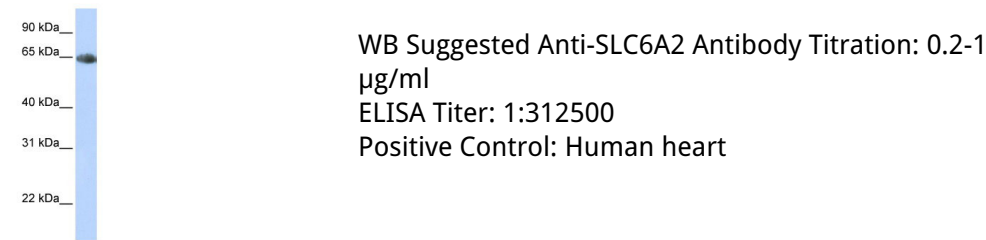
Name	SLC6A2 (HGNC:11048)
Synonyms	NAT1, NET1, SLC6A5
Function	Mediates sodium- and chloride-dependent transport of norepinephrine (also known as noradrenaline), the primary signaling neurotransmitter in the autonomic sympathetic nervous system (PubMed: 2008212 , PubMed: 8125921 , PubMed: 38750358). Is responsible for norepinephrine re-uptake and clearance from the synaptic cleft, thus playing a crucial role in norepinephrine inactivation and homeostasis (By similarity). Can also mediate sodium- and chloride-dependent transport of dopamine (PubMed: 11093780 , PubMed: 8125921 , PubMed: 39395208 , PubMed: 39048818).

Cellular Location	Cell membrane; Multi-pass membrane protein. Cell projection, axon {ECO:0000250 UniProtKB:O55192}. Synapse, synaptosome {ECO:0000250 UniProtKB:O55192}
--------------------------	---

References

Suzuki,A., (2008) Neurosci. Lett. 439 (1), 52-55 Reconstitution and Storage:For short term use, store at 2-8C up to 1 week. For long term storage, store at -20C in small aliquots to prevent freeze-thaw cycles.Publications:Bayles, R. et al. Epigenetic modification of the norepinephrine transporter gene in postural tachycardia syndrome. Arterioscler. Thromb. Vasc. Biol. 32, 1910-6 (2012). WB, Human, Dog, Rat, Bovine, H, Rabbit, Guinea pig, Mouse22723437

Images



Please note: All products are 'FOR RESEARCH USE ONLY. NOT FOR USE IN DIAGNOSTIC OR THERAPEUTIC PROCEDURES'.