

CD40 antibody - N-terminal region

Rabbit Polyclonal Antibody

Catalog # AI11961

Product Information

Application	WB
Primary Accession	P25942
Other Accession	NM_001250 , NP_001241
Reactivity	Human, Rabbit
Predicted	Human
Host	Rabbit
Clonality	Polyclonal
Calculated MW	30619

Additional Information

Gene ID	958
Alias Symbol Other Names	Bp50, CDW40, MGC9013, TNFRSF5, p50 Tumor necrosis factor receptor superfamily member 5, B-cell surface antigen CD40, Bp50, CD40L receptor, CDw40, CD40, CD40, TNFRSF5
Format	Liquid. Purified antibody supplied in 1x PBS buffer with 0.09% (w/v) sodium azide and 2% sucrose.
Reconstitution & Storage	Add 50 ul of distilled water. Final anti-CD40 antibody concentration is 1 mg/ml in PBS buffer with 2% sucrose. For longer periods of storage, store at 20°C. Avoid repeat freeze-thaw cycles.
Precautions	CD40 antibody - N-terminal region is for research use only and not for use in diagnostic or therapeutic procedures.

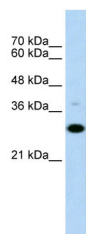
Protein Information

Name	CD40
Synonyms	TNFRSF5
Function	Receptor for TNFSF5/CD40LG (PubMed: 31331973). Transduces TRAF6- and MAP3K8-mediated signals that activate ERK in macrophages and B cells, leading to induction of immunoglobulin secretion (By similarity).
Cellular Location	[Isoform I]: Cell membrane; Single-pass type I membrane protein
Tissue Location	B-cells and in primary carcinomas.

References

von (2006) Blood 107 (7), 2786-2789 Reconstitution and Storage: For short term use, store at 2-8°C up to 1 week. For long term storage, store at -20°C in small aliquots to prevent freeze-thaw cycles.

Images



WB Suggested Anti-CD40 Antibody Titration: 0.2-1 µg/ml
Positive Control: Raji cell lysate
CD40 is strongly supported by BioGPS gene expression data to be expressed in Human Raji cells

Please note: All products are 'FOR RESEARCH USE ONLY. NOT FOR USE IN DIAGNOSTIC OR THERAPEUTIC PROCEDURES'.