

# CRMP1 antibody - C-terminal region

Rabbit Polyclonal Antibody

Catalog # AI11962

## Product Information

---

<b>Application</b>	WB
<b>Primary Accession</b>	<a href="#">Q14194</a>
<b>Other Accession</b>	<a href="#">NM_001313</a> , <a href="#">NP_001304</a>
<b>Reactivity</b>	Human, Mouse, Rat, Rabbit, Zebrafish, Dog, Horse, Bovine
<b>Predicted</b>	Human, Mouse, Pig, Chicken, Dog, Horse, Bovine
<b>Host</b>	Rabbit
<b>Clonality</b>	Polyclonal
<b>Calculated MW</b>	62184

## Additional Information

---

<b>Gene ID</b>	1400
<b>Alias Symbol</b>	DPYSL1, DRP-1, DRP1, CRMP-1, ULIP-3
<b>Other Names</b>	Dihydropyrimidinase-related protein 1, DRP-1, Collapsin response mediator protein 1, CRMP-1, Unc-33-like phosphoprotein 3, ULIP-3, CRMP1, DPYSL1, ULIP3
<b>Format</b>	Liquid. Purified antibody supplied in 1x PBS buffer with 0.09% (w/v) sodium azide and 2% sucrose.
<b>Reconstitution &amp; Storage</b>	Add 50 ul of distilled water. Final anti-CRMP1 antibody concentration is 1 mg/ml in PBS buffer with 2% sucrose. For longer periods of storage, store at 20°C. Avoid repeat freeze-thaw cycles.
<b>Precautions</b>	CRMP1 antibody - C-terminal region is for research use only and not for use in diagnostic or therapeutic procedures.

## Protein Information

---

<b>Name</b>	CRMP1
<b>Synonyms</b>	DPYSL1, ULIP3
<b>Function</b>	Necessary for signaling by class 3 semaphorins and subsequent remodeling of the cytoskeleton (PubMed: <a href="#">25358863</a> ). Plays a role in axon guidance (PubMed: <a href="#">25358863</a> ). During the axon guidance process, acts downstream of SEMA3A to promote FLNA dissociation from F-actin which results in the rearrangement of the actin cytoskeleton and the collapse of the growth cone (PubMed: <a href="#">25358863</a> ). Involved in invasive growth and cell migration (PubMed: <a href="#">11562390</a> ). May participate in cytokinesis (PubMed: <a href="#">19799413</a> ).

**Cellular Location** Cytoplasm. Cytoplasm, cytoskeleton, microtubule organizing center, centrosome. Cytoplasm, cytoskeleton, spindle. Cell projection, growth cone {ECO:0000250|UniProtKB:P97427}. Cytoplasm, cytoskeleton {ECO:0000250|UniProtKB:P97427}. Perikaryon {ECO:0000250|UniProtKB:P97427}. Note=Associated with centrosomes and the mitotic spindle during metaphase (PubMed:11562390). Colocalizes with FLNA and tubulin in the central region of DRG neuron growth cone (By similarity). Following SEMA3A stimulation of DRG neurons, colocalizes with F-actin (By similarity) {ECO:0000250|UniProtKB:P97427, ECO:0000269|PubMed:11562390}

**Tissue Location** Brain.

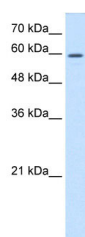
## References

---

Stelzl,U., (2005) Cell 122 (6), 957-968 Reconstitution and Storage:For short term use, store at 2-8C up to 1 week. For long term storage, store at -20C in small aliquots to prevent freeze-thaw cycles.

## Images

---



WB Suggested Anti-CRMP1 Antibody Titration: 0.2-1 µg/ml  
Positive Control: HepG2 cell lysate

Please note: All products are 'FOR RESEARCH USE ONLY. NOT FOR USE IN DIAGNOSTIC OR THERAPEUTIC PROCEDURES'.