

Dpt antibody - N-terminal region

Rabbit Polyclonal Antibody

Catalog # AI11967

Product Information

Application	WB
Primary Accession	Q9QZZ6
Other Accession	NM_019759 , NP_062733
Reactivity	Human, Mouse, Rat, Rabbit, Zebrafish, Pig, Dog, Horse, Bovine
Predicted	Rat, Chicken, Dog
Host	Rabbit
Clonality	Polyclonal
Calculated MW	23995

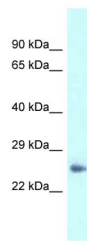
Additional Information

Gene ID	56429
Alias Symbol Other Names	1810032B19Rik, 5033416F05Rik, EQ-1, Eq1 Dermatopontin, Early quiescence protein 1, EQ-1, Tyrosine-rich acidic matrix protein, TRAMP, Dpt
Format	Liquid. Purified antibody supplied in 1x PBS buffer with 0.09% (w/v) sodium azide and 2% sucrose.
Reconstitution & Storage	Add 50 ul of distilled water. Final anti-Dpt antibody concentration is 1 mg/ml in PBS buffer with 2% sucrose. For longer periods of storage, store at 20°C. Avoid repeat freeze-thaw cycles.
Precautions	Dpt antibody - N-terminal region is for research use only and not for use in diagnostic or therapeutic procedures.

Protein Information

Name	Dpt
Function	Seems to mediate adhesion by cell surface integrin binding. May serve as a communication link between the dermal fibroblast cell surface and its extracellular matrix environment. Enhances TGFβ1 activity (By similarity). Inhibits cell proliferation. Accelerates collagen fibril formation, and stabilizes collagen fibrils against low- temperature dissociation.
Cellular Location	Secreted, extracellular space, extracellular matrix

Images



WB Suggested Anti-Dpt Antibody Titration: 1.0 µg/ml
Positive Control: Mouse Pancreas

Please note: All products are 'FOR RESEARCH USE ONLY. NOT FOR USE IN DIAGNOSTIC OR THERAPEUTIC PROCEDURES'.