

MMP3 antibody - middle region

Rabbit Polyclonal Antibody

Catalog # AI11969

Product Information

Application	WB, IHC
Primary Accession	P28862
Other Accession	NM_002422 , NP_002413
Reactivity	Human, Mouse, Rat, Rabbit, Zebrafish, Pig, Dog, Horse, Bovine, Sheep
Predicted	Human, Mouse, Rat, Rabbit, Pig, Dog, Horse
Host	Rabbit
Clonality	Polyclonal
Calculated MW	53845

Additional Information

Gene ID	17392
Alias Symbol	CHDS6, MGC126102, MGC126103, MGC126104, MMP-3, SL-1, STMY, STMY1, STR1
Other Names	Stromelysin-1, SL-1, 3.4.24.17, EMS-2, Matrix metalloproteinase-3, MMP-3, Transin-1, Mmp3
Format	Liquid. Purified antibody supplied in 1x PBS buffer with 0.09% (w/v) sodium azide and 2% sucrose.
Reconstitution & Storage	Add 50 ul of distilled water. Final anti-MMP3 antibody concentration is 1 mg/ml in PBS buffer with 2% sucrose. For longer periods of storage, store at 20°C. Avoid repeat freeze-thaw cycles.
Precautions	MMP3 antibody - middle region is for research use only and not for use in diagnostic or therapeutic procedures.

Protein Information

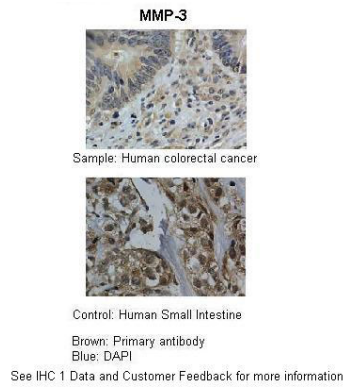
Name	Mmp3
Function	Metalloproteinase with a rather broad substrate specificity that can degrade fibronectin, laminin, gelatins of type I, III, IV, and V; collagens III, IV, X, and IX, and cartilage proteoglycans. Activates different molecules including growth factors, plasminogen or other matrix metalloproteinases such as MMP9. Once released into the extracellular matrix (ECM), the inactive pro-enzyme is activated by the plasmin cascade signaling pathway. Also acts intracellularly. For example, in dopaminergic neurons, gets activated by the serine protease HTRA2 upon stress and plays a pivotal role in DA neuronal degeneration by mediating microglial activation and alpha-synuclein/SNCA cleavage

(PubMed:[17116747](#)). In addition, plays a role in immune response and possesses antiviral activity against various viruses (PubMed:[35940311](#)). Mechanistically, translocates from the cytoplasm into the cell nucleus upon virus infection to influence NF-kappa-B activities (PubMed:[35940311](#)).

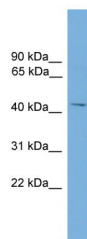
Cellular Location

Secreted, extracellular space, extracellular matrix

Images



Application: IHC
Species+tissue/cell type: Control-Human small intestine,
Sample-human colorectal cancer
Primary Antibody Dilution: 1:100
Secondary Antibody: Biotinylated pig
anti-rabbit+streptavidin-HRP



WB Suggested Anti-MMP3 Antibody Titration: 0.2-1 µg/ml
ELISA Titer: 1:62500
Positive Control: Hela cell lysate

Please note: All products are 'FOR RESEARCH USE ONLY. NOT FOR USE IN DIAGNOSTIC OR THERAPEUTIC PROCEDURES'.