

PLIN antibody - N-terminal region

Rabbit Polyclonal Antibody

Catalog # AI11970

Product Information

Application	WB
Primary Accession	O60240
Other Accession	NM_002666 , NP_002657
Reactivity	Human, Mouse, Rat, Zebrafish, Pig, Dog, Horse, Bovine, Sheep
Predicted	Human, Mouse, Rat, Zebrafish, Pig, Chicken, Bovine, Sheep
Host	Rabbit
Clonality	Polyclonal
Calculated MW	55990

Additional Information

Gene ID	5346
Alias Symbol	PERI, PLIN, FPLD4
Other Names	Perilipin-1, Lipid droplet-associated protein, PLIN1, PERI, PLIN
Format	Liquid. Purified antibody supplied in 1x PBS buffer with 0.09% (w/v) sodium azide and 2% sucrose.
Reconstitution & Storage	Add 100 ul of distilled water. Final anti-PLIN antibody concentration is 1 mg/ml in PBS buffer with 2% sucrose. For longer periods of storage, store at 20°C. Avoid repeat freeze-thaw cycles.
Precautions	PLIN antibody - N-terminal region is for research use only and not for use in diagnostic or therapeutic procedures.

Protein Information

Name	PLIN1
Synonyms	PERI, PLIN
Function	Modulator of adipocyte lipid metabolism. Coats lipid storage droplets to protect them from breakdown by hormone-sensitive lipase (HSL). Its absence may result in leanness. Plays a role in unilocular lipid droplet formation by activating CIDEC. Their interaction promotes lipid droplet enlargement and directional net neutral lipid transfer. May modulate lipolysis and triglyceride levels.
Cellular Location	Endoplasmic reticulum. Lipid droplet. Note=Lipid droplet surface-associated.

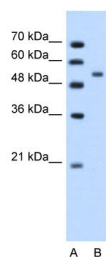
Tissue Location

Detected in adipocytes from white adipose tissue (at protein level)
(PubMed:27832861). Detected in visceral adipose tissue and mammary gland
(PubMed:9521880)

References

Moore,H.P., (2005) J. Biol. Chem. 280 (52), 43109-43120 Reconstitution and Storage:For short term use, store at 2-8C up to 1 week. For long term storage, store at -20C in small aliquots to prevent freeze-thaw cycles.

Images



WB Suggested Anti-PLIN Antibody Titration: 1.25µg/ml
Positive Control: Jurkat cell lysate

Please note: All products are 'FOR RESEARCH USE ONLY. NOT FOR USE IN DIAGNOSTIC OR THERAPEUTIC PROCEDURES'.