

Rasa1 antibody - C-terminal region

Rabbit Polyclonal Antibody

Catalog # AI11973

Product Information

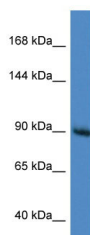
Application	WB
Primary Accession	Q91YX7
Other Accession	NM_145452 , NP_663427
Reactivity	Human, Mouse, Rat, Rabbit, Zebrafish, Pig, Dog, Horse, Bovine
Predicted	Human, Mouse, Rat, Rabbit, Zebrafish, Pig, Bovine
Host	Rabbit
Clonality	Polyclonal
Calculated MW	94 kDa

Additional Information

Alias Symbol	Gap, MGC7759, RasGAP, Rasa
Format	Liquid. Purified antibody supplied in 1x PBS buffer with 0.09% (w/v) sodium azide and 2% sucrose.
Reconstitution & Storage	Add 50 ul of distilled water. Final anti-Rasa1 antibody concentration is 1 mg/ml in PBS buffer with 2% sucrose. For longer periods of storage, store at 20°C. Avoid repeat freeze-thaw cycles.
Precautions	Rasa1 antibody - C-terminal region is for research use only and not for use in diagnostic or therapeutic procedures.

Protein Information

Images



WB Suggested Anti-Rasa1 Antibody Titration: 1.0 µg/ml
Positive Control: Mouse Brain