

# S100A3 antibody - N-terminal region

Rabbit Polyclonal Antibody

Catalog # AI11974

## Product Information

---

<b>Application</b>	WB, IHC
<b>Primary Accession</b>	<a href="#">P33764</a>
<b>Other Accession</b>	<a href="#">NM_002960</a> , <a href="#">NP_002951</a>
<b>Reactivity</b>	Human, Mouse, Rat, Rabbit, Pig, Dog, Horse, Bovine
<b>Predicted</b>	Mouse, Dog, Bovine
<b>Host</b>	Rabbit
<b>Clonality</b>	Polyclonal
<b>Calculated MW</b>	11713

## Additional Information

---

<b>Gene ID</b>	6274
<b>Alias Symbol</b>	S100E
<b>Other Names</b>	Protein S100-A3, Protein S-100E, S100 calcium-binding protein A3, S100A3, S100E
<b>Format</b>	Liquid. Purified antibody supplied in 1x PBS buffer with 0.09% (w/v) sodium azide and 2% sucrose.
<b>Reconstitution &amp; Storage</b>	Add 100 ul of distilled water. Final anti-S100A3 antibody concentration is 1 mg/ml in PBS buffer with 2% sucrose. For longer periods of storage, store at 20°C. Avoid repeat freeze-thaw cycles.
<b>Precautions</b>	S100A3 antibody - N-terminal region is for research use only and not for use in diagnostic or therapeutic procedures.

## Protein Information

---

<b>Name</b>	S100A3
<b>Synonyms</b>	S100E
<b>Function</b>	Binds both calcium and zinc. May be involved in calcium- dependent cuticle cell differentiation, hair shaft and hair cuticular barrier formation.
<b>Cellular Location</b>	Cytoplasm.
<b>Tissue Location</b>	Skin specific, specifically expressed at the inner endocuticle of hair fibers.

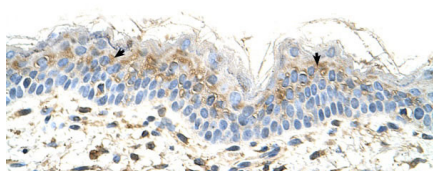
## References

---

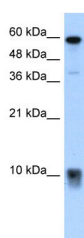
Kizawa,K., (2002) Biochem. Biophys. Res. Commun. 299 (5), 857-862  
Reconstitution and Storage: For short term use, store at 2-8C up to 1 week. For long term storage, store at -20C in small aliquots to prevent freeze-thaw cycles.

## Images

---



Rabbit Anti-S100A3 Antibody  
Paraffin Embedded Tissue: Human Skin  
Cellular Data: Squamous epithelial cells  
Antibody Concentration: 4.0-8.0 µg/ml  
Magnification: 400X



WB Suggested Anti-S100A3 Antibody Titration: 5.0µg/ml  
Positive Control: OVCAR-3 cell lysate  
S100A3 is supported by BioGPS gene expression data to be expressed in OVCAR3

Please note: All products are 'FOR RESEARCH USE ONLY. NOT FOR USE IN DIAGNOSTIC OR THERAPEUTIC PROCEDURES'.