

SEMG1 antibody - N-terminal region

Rabbit Polyclonal Antibody

Catalog # AI11975

Product Information

Application	WB, IHC
Primary Accession	P04279
Other Accession	NM_003007 , NP_002998
Reactivity	Human, Pig
Predicted	Human
Host	Rabbit
Clonality	Polyclonal
Calculated MW	52131

Additional Information

Gene ID	6406
Alias Symbol Other Names	MGC14719, SEMG, SGI, CT103, dj172H20.2 Semenogelin-1, Semenogelin I, SGI, Alpha-inhibin-92, Alpha-inhibin-31, Seminal basic protein, SEMG1, SEMG
Format	Liquid. Purified antibody supplied in 1x PBS buffer with 0.09% (w/v) sodium azide and 2% sucrose.
Reconstitution & Storage	Add 100 ul of distilled water. Final anti-SEMG1 antibody concentration is 1 mg/ml in PBS buffer with 2% sucrose. For longer periods of storage, store at 20°C. Avoid repeat freeze-thaw cycles.
Precautions	SEMG1 antibody - N-terminal region is for research use only and not for use in diagnostic or therapeutic procedures.

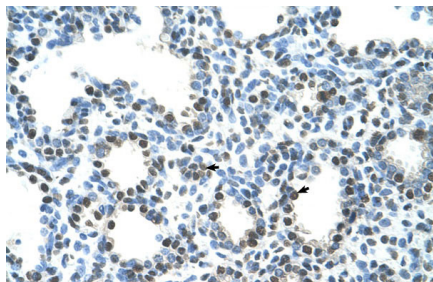
Protein Information

Name	SEMG1
Synonyms	SEMG
Function	Predominant protein in semen. It participates in the formation of a gel matrix entrapping the accessory gland secretions and ejaculated spermatozoa. Fragments of semenogelin and/or fragments of the related proteins may contribute to the activation of progressive sperm movements as the gel-forming proteins are fragmented by KLK3/PSA.
Cellular Location	Secreted.

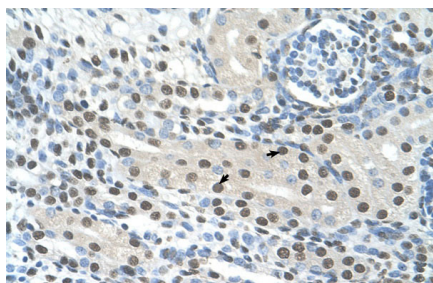
References

Hienonen,T., (2005) Cancer Res. 65 (11), 4607-4613 Reconstitution and Storage:For short term use, store at 2-8C up to 1 week. For long term storage, store at -20C in small aliquots to prevent freeze-thaw cycles.

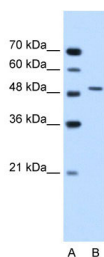
Images



Rabbit Anti-SEMG1 Antibody
Paraffin Embedded Tissue: Human Lung
Cellular Data: Alveolar cells
Antibody Concentration: 4.0-8.0 µg/ml
Magnification: 400X



Rabbit Anti-SEMG1 Antibody
Paraffin Embedded Tissue: Human Kidney
Cellular Data: Epithelial cells of renal tubule
Antibody Concentration: 4.0-8.0 µg/ml
Magnification: 400X



WB Suggested Anti-SEMG1 Antibody Titration: 1.25µg/ml
Positive Control: Jurkat cell lysate

Please note: All products are 'FOR RESEARCH USE ONLY. NOT FOR USE IN DIAGNOSTIC OR THERAPEUTIC PROCEDURES'.