

SEMG2 antibody - N-terminal region

Rabbit Polyclonal Antibody

Catalog # AI11976

Product Information

Application	WB
Primary Accession	Q02383
Other Accession	NM_003008 , NP_002999
Reactivity	Human, Pig
Predicted	Human
Host	Rabbit
Clonality	Polyclonal
Calculated MW	65444

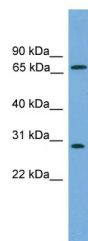
Additional Information

Gene ID	6407
Alias Symbol	SGII
Other Names	Semenogelin-2, Semenogelin II, SGII, SEMG2
Format	Liquid. Purified antibody supplied in 1x PBS buffer with 0.09% (w/v) sodium azide and 2% sucrose.
Reconstitution & Storage	Add 50 ul of distilled water. Final anti-SEMG2 antibody concentration is 1 mg/ml in PBS buffer with 2% sucrose. For longer periods of storage, store at 20°C. Avoid repeat freeze-thaw cycles.
Precautions	SEMG2 antibody - N-terminal region is for research use only and not for use in diagnostic or therapeutic procedures.

Protein Information

Name	SEMG2
Function	Participates in the formation of a gel matrix (sperm coagulum) entrapping the accessory gland secretions and ejaculated spermatozoa.
Cellular Location	Secreted.
Tissue Location	Seminal vesicles, and to a much lesser extent, epididymis

Images



WB Suggested Anti-SEMG2 Antibody Titration: 0.2-1 µg/ml

ELISA Titer: 1:312500

Positive Control: COLO205 cell lysate

Please note: All products are 'FOR RESEARCH USE ONLY. NOT FOR USE IN DIAGNOSTIC OR THERAPEUTIC PROCEDURES'.