

# UPP1 antibody - middle region

Rabbit Polyclonal Antibody

Catalog # AI11980

## Product Information

---

Application	WB
Primary Accession	<a href="#">Q16831</a>
Other Accession	<a href="#">NM_003364</a> , <a href="#">NP_003355</a>
Reactivity	Human, Mouse, Rat, Rabbit, Zebrafish, Dog, Horse, Bovine
Predicted	Human, Mouse, Rat, Bovine
Host	Rabbit
Clonality	Polyclonal
Calculated MW	33934

## Additional Information

---

Gene ID	7378
Alias Symbol	UDRPASE, UP, UPASE, UPP
Other Names	Uridine phosphorylase 1, UPase 1, UrdPase 1, 2.4.2.3, UPP1, UP
Format	Liquid. Purified antibody supplied in 1x PBS buffer with 0.09% (w/v) sodium azide and 2% sucrose.
Reconstitution & Storage	Add 50 ul of distilled water. Final anti-UPP1 antibody concentration is 1 mg/ml in PBS buffer with 2% sucrose. For longer periods of storage, store at 20°C. Avoid repeat freeze-thaw cycles.
Precautions	UPP1 antibody - middle region is for research use only and not for use in diagnostic or therapeutic procedures.

## Protein Information

---

Name	UPP1 ( <a href="#">HGNC:12576</a> )
Synonyms	UP
Function	Catalyzes the reversible phosphorylytic cleavage of uridine to uracil and ribose-1-phosphate which can then be utilized as carbon and energy sources or in the rescue of pyrimidine bases for nucleotide synthesis (PubMed: <a href="#">7488099</a> ). Shows broad substrate specificity and can also accept deoxyuridine and other analogous compounds (Probable).

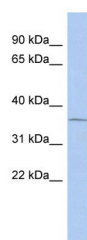
## References

---

Temmink, O.H., (2006) Int. J. Biochem. Cell Biol. 38 (10), 1759-1765 Reconstitution and Storage: For short term use, store at 2-8°C up to 1 week. For long term storage, store at -20°C in small aliquots to prevent freeze-thaw cycles.

## Images

---



WB Suggested Anti-UPP1 Antibody Titration: 0.2-1 µg/ml

ELISA Titer: 1:312500

Positive Control: OVCAR-3 cell lysate

Please note: All products are 'FOR RESEARCH USE ONLY. NOT FOR USE IN DIAGNOSTIC OR THERAPEUTIC PROCEDURES'.