

ATP2A1 antibody - N-terminal region

Rabbit Polyclonal Antibody

Catalog # AI11983

Product Information

Application	WB, IHC
Primary Accession	Q7Z675
Other Accession	NM_004320 , NP_004311
Reactivity	Human, Mouse, Rat, Rabbit, Zebrafish, Pig, Dog, Horse, Bovine
Predicted	Human, Rat, Zebrafish, Pig, Dog, Horse
Host	Rabbit
Clonality	Polyclonal
Calculated MW	109 KDa

Additional Information

Alias Symbol	ATP2A, SERCA1
Format	Liquid. Purified antibody supplied in 1x PBS buffer with 0.09% (w/v) sodium azide and 2% sucrose.
Reconstitution & Storage	Add 50 ul of distilled water. Final anti-ATP2A1 antibody concentration is 1 mg/ml in PBS buffer with 2% sucrose. For longer periods of storage, store at 20°C. Avoid repeat freeze-thaw cycles.
Precautions	ATP2A1 antibody - N-terminal region is for research use only and not for use in diagnostic or therapeutic procedures.

Protein Information

References

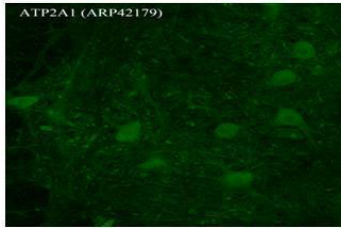
Hino, S., (2007) Hum. Mol. Genet. 16 (23), 2834-2843 Reconstitution and Storage: For short term use, store at 2-8°C up to 1 week. For long term storage, store at -20°C in small aliquots to prevent freeze-thaw cycles.

Images

Sample Type : Rhesus macaque spinal cord Primary
Antibody Dilution : 1:300 Secondary Antibody : Donkey
anti Rabbit 488 Secondary Antibody Dilution : 1:500
Color/Signal Descriptions : Green: ATP2A1 Gene Name :
ATP2A1 Submitted by : Timur Mavlyutov, Ph. D.,
Department of Pharmacology, University of Wisconsin
Medical School, 1300 University Avenue, Madison, WI

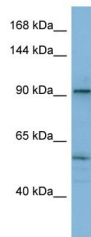
ATP2A1

53706



Green: ATP2A1

See IHC 1 Data and Customer Feedback for more Information



WB Suggested Anti-ATP2A1 Antibody Titration: 0.2-1
µg/ml
ELISA Titer: 1:62500
Positive Control: THP-1 cell lysate

Please note: All products are 'FOR RESEARCH USE ONLY. NOT FOR USE IN DIAGNOSTIC OR THERAPEUTIC PROCEDURES'.