

PRF1 antibody - N-terminal region

Rabbit Polyclonal Antibody

Catalog # AI11986

Product Information

Application	WB
Primary Accession	P14222
Other Accession	NM_005041 , NP_005032
Reactivity	Human, Rat, Rabbit, Pig, Dog, Horse, Bovine
Predicted	Human, Pig, Dog, Horse, Bovine
Host	Rabbit
Clonality	Polyclonal
Calculated MW	61377

Additional Information

Gene ID	5551
Alias Symbol	FLH2, HPLH2, MGC65093, P1, PFP, PFN1
Other Names	Perforin-1, P1, Cytolysin, Lymphocyte pore-forming protein, PFP, PRF1, PFP
Format	Liquid. Purified antibody supplied in 1x PBS buffer with 0.09% (w/v) sodium azide and 2% sucrose.
Reconstitution & Storage	Add 50 ul of distilled water. Final anti-PRF1 antibody concentration is 1 mg/ml in PBS buffer with 2% sucrose. For longer periods of storage, store at 20°C. Avoid repeat freeze-thaw cycles.
Precautions	PRF1 antibody - N-terminal region is for research use only and not for use in diagnostic or therapeutic procedures.

Protein Information

Name	PRF1
Synonyms	PFP
Function	Pore-forming protein that plays a key role in granzyme- mediated programmed cell death, and in defense against virus-infected or neoplastic cells (PubMed: 20889983 , PubMed: 21037563 , PubMed: 24558045 , PubMed: 9058810 , PubMed: 9164947). Plays an important role in killing other cells that are recognized as non-self by the immune system, e.g. in transplant rejection or some forms of autoimmune disease (PubMed: 9058810). Can insert into the membrane of target cells in its calcium-bound form, oligomerize and form large pores (PubMed: 20889983 , PubMed: 21037563). Promotes cytolysis and apoptosis of target cells by mediating the passage and

uptake of cytotoxic granzymes (PubMed:[20038786](#), PubMed:[20225066](#), PubMed:[24558045](#), PubMed:[32299851](#)). Facilitates the delivery of cationic cargo protein, while anionic or neural proteins are not delivered efficiently (PubMed:[24558045](#)). Perforin pores allow the release of mature caspase-7 (CASP7) into the extracellular milieu (By similarity).

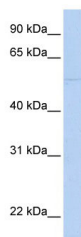
Cellular Location

Cytolytic granule. Secreted. Cell membrane; Multi-pass membrane protein. Endosome lumen. Note=Stored in cytolytic granules of cytolytic T-lymphocytes and secreted into the cleft between T- lymphocyte and target cell (PubMed:20038786). Inserts into the cell membrane of target cells and forms pores (PubMed:20889983). Membrane insertion and pore formation requires a major conformation change (PubMed:20889983). May be taken up via endocytosis involving clathrin- coated vesicles and accumulate in a first time in large early endosomes (PubMed:20038786).

References

Okur,H., (2008) Leuk. Res. 32 (6), 972-975 Reconstitution and Storage:For short term use, store at 2-8C up to 1 week. For long term storage, store at -20C in small aliquots to prevent freeze-thaw cycles.

Images



WB Suggested Anti-PRF1 Antibody Titration: 0.2-1 µg/ml
Positive Control: MCF7 cell lysate

Please note: All products are 'FOR RESEARCH USE ONLY. NOT FOR USE IN DIAGNOSTIC OR THERAPEUTIC PROCEDURES'.