

# HP antibody - N-terminal region

Rabbit Polyclonal Antibody

Catalog # AI11988

## Product Information

---

<b>Application</b>	WB, IHC
<b>Primary Accession</b>	<a href="#">P00738</a>
<b>Other Accession</b>	<a href="#">NM_005143</a> , <a href="#">NP_005134</a>
<b>Reactivity</b>	Human, Mouse, Rat, Rabbit, Pig, Dog, Horse
<b>Predicted</b>	Human, Mouse, Rat, Rabbit, Pig, Dog
<b>Host</b>	Rabbit
<b>Clonality</b>	Polyclonal
<b>Calculated MW</b>	45205

## Additional Information

---

<b>Gene ID</b>	3240
<b>Alias Symbol</b>	hp2-alpha, BP, HPA1S, HP2ALPHA2
<b>Other Names</b>	Haptoglobin, Zonulin, Haptoglobin alpha chain, Haptoglobin beta chain, HP
<b>Format</b>	Liquid. Purified antibody supplied in 1x PBS buffer with 0.09% (w/v) sodium azide and 2% sucrose.
<b>Reconstitution &amp; Storage</b>	Add 50 ul of distilled water. Final anti-HP antibody concentration is 1 mg/ml in PBS buffer with 2% sucrose. For longer periods of storage, store at 20°C. Avoid repeat freeze-thaw cycles.
<b>Precautions</b>	HP antibody - N-terminal region is for research use only and not for use in diagnostic or therapeutic procedures.

## Protein Information

---

<b>Name</b>	HP
<b>Function</b>	As a result of hemolysis, hemoglobin is found to accumulate in the kidney and is secreted in the urine. Haptoglobin captures, and combines with free plasma hemoglobin to allow hepatic recycling of heme iron and to prevent kidney damage. Haptoglobin also acts as an antioxidant, has antibacterial activity, and plays a role in modulating many aspects of the acute phase response. Hemoglobin/haptoglobin complexes are rapidly cleared by the macrophage CD163 scavenger receptor expressed on the surface of liver Kupfer cells through an endocytic lysosomal degradation pathway.
<b>Cellular Location</b>	Secreted.

## Tissue Location

Expressed by the liver and secreted in plasma.

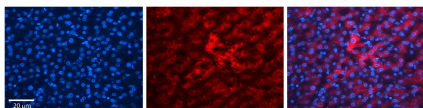
## References

---

Borsody,M., (2006) Neurology 66 (5), 634-640  
Reconstitution and Storage:For short term use, store at 2-8C up to 1 week. For long term storage, store at -20C in small aliquots to prevent freeze-thaw cycles.

## Images

---



HP (haptoglobin)antibody - N-terminal region (AI11988)  
Catalog Number: AI11988  
Formalin Fixed Paraffin Embedded Tissue: Human Liver  
Tissue Observed Staining: Cytoplasm in hepatocytes  
Primary Antibody  
Concentration: 1:100  
Secondary Antibody: Donkey anti-Rabbit-Cy3  
Secondary Antibody  
Concentration: 1:200  
Magnification: 20X  
Exposure Time: 0.5 - 2.0 sec



WB Suggested Anti-HP Antibody Titration: 0.2-1 µg/ml  
Positive Control: Jurkat cell lysate

Please note: All products are 'FOR RESEARCH USE ONLY. NOT FOR USE IN DIAGNOSTIC OR THERAPEUTIC PROCEDURES'.