

Fgf3 antibody - C-terminal region

Rabbit Polyclonal Antibody

Catalog # AI11989

Product Information

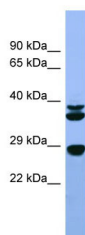
Application	WB
Primary Accession	Q8R5L9
Other Accession	NM_130817 , NP_570830
Reactivity	Human, Mouse, Rat, Zebrafish, Pig, Dog, Horse, Bovine
Predicted	Human, Mouse, Rat, Zebrafish, Pig, Chicken, Bovine
Host	Rabbit
Clonality	Polyclonal
Calculated MW	27 KDa

Additional Information

Alias Symbol	Int2, Fgf3
Format	Liquid. Purified antibody supplied in 1x PBS buffer with 0.09% (w/v) sodium azide and 2% sucrose.
Reconstitution & Storage	Add 50 ul of distilled water. Final anti-Fgf3 antibody concentration is 1 mg/ml in PBS buffer with 2% sucrose. For longer periods of storage, store at 20°C. Avoid repeat freeze-thaw cycles.
Precautions	Fgf3 antibody - C-terminal region is for research use only and not for use in diagnostic or therapeutic procedures.

Protein Information

Images



WB Suggested Anti-Fgf3 Antibody Titration: 0.2-1 µg/ml
ELISA Titer: 1:312500
Positive Control: Rat Liver