

Endou antibody - middle region

Rabbit Polyclonal Antibody

Catalog # AI11994

Product Information

Application	WB
Primary Accession	Q3V188
Other Accession	NM_001168693 , NP_001162164
Reactivity	Human, Mouse, Rat, Rabbit, Dog, Horse, Bovine
Predicted	Human, Mouse, Rat
Host	Rabbit
Clonality	Polyclonal
Calculated MW	47010

Additional Information

Gene ID	19011
Alias Symbol	Pp11r, Tcl-30
Other Names	Poly(U)-specific endoribonuclease, 3.1.-., Placental protein 11-related protein, PP11-related protein, Protein endoU, T-cell-specific protein 30, Tcl-30, Uridylate-specific endoribonuclease, Endou, Pp11r
Format	Liquid. Purified antibody supplied in 1x PBS buffer with 0.09% (w/v) sodium azide and 2% sucrose.
Reconstitution & Storage	Add 50 ul of distilled water. Final anti-Endou antibody concentration is 1 mg/ml in PBS buffer with 2% sucrose. For longer periods of storage, store at 20°C. Avoid repeat freeze-thaw cycles.
Precautions	Endou antibody - middle region is for research use only and not for use in diagnostic or therapeutic procedures.

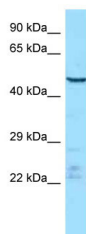
Protein Information

Name	Endou
Synonyms	Pp11r
Function	Endoribonuclease that cleaves single-stranded RNAs at 5' of uridylates and releases a product with a 2',3'-cyclic phosphate at the 3'-end. The UU and GU sites are more efficiently cleaved than CU and AU sites. Targets mRNAs to regulate their expression (By similarity).
Cellular Location	Secreted.

Tissue Location

Specifically expressed in T-cells during apoptosis. Expressed in surface heat stable antigen (HSA)-containing T-cells populations (CD4(-)CD8(-)HSA(+), CD4(+)CD8(-)HSA(+), CD4(-)CD8(+)HSA(+), and CD4(+)CD8(+)HSA(+)) and not in the HSA(-) single positive T-cell populations of the thymus or spleen, suggesting that expression is lost during T-cell maturation and is absent at the most mature stages of T-cell development.

Images



WB Suggested Anti-Endou Antibody Titration: 1.0 µg/ml
Positive Control: Mouse Thymus

Please note: All products are 'FOR RESEARCH USE ONLY. NOT FOR USE IN DIAGNOSTIC OR THERAPEUTIC PROCEDURES'.