

# Lgals4 antibody - C-terminal region

Rabbit Polyclonal Antibody

Catalog # AI11995

## Product Information

---

<b>Application</b>	WB
<b>Primary Accession</b>	<a href="#">Q8K419</a>
<b>Other Accession</b>	<a href="#">NM_010706</a> , <a href="#">NP_034836</a>
<b>Reactivity</b>	Human, Mouse, Rat, Rabbit, Zebrafish, Pig, Dog, Horse, Bovine
<b>Predicted</b>	Human, Mouse, Rat, Rabbit, Dog, Horse
<b>Host</b>	Rabbit
<b>Clonality</b>	Polyclonal
<b>Calculated MW</b>	36372

## Additional Information

---

<b>Gene ID</b>	16855
<b>Alias Symbol</b>	galectin-4, gal-4
<b>Other Names</b>	Galectin-4, Gal-4, Lactose-binding lectin 4, Lgals4
<b>Format</b>	Liquid. Purified antibody supplied in 1x PBS buffer with 0.09% (w/v) sodium azide and 2% sucrose.
<b>Reconstitution &amp; Storage</b>	Add 50 ul of distilled water. Final anti-Lgals4 antibody concentration is 1 mg/ml in PBS buffer with 2% sucrose. For longer periods of storage, store at 20°C. Avoid repeat freeze-thaw cycles.
<b>Precautions</b>	Lgals4 antibody - C-terminal region is for research use only and not for use in diagnostic or therapeutic procedures.

## Protein Information

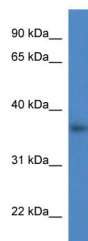
---

<b>Name</b>	Lgals4
<b>Function</b>	Galectin that binds lactose and a related range of sugars.
<b>Tissue Location</b>	Epithelial cells of the embryonic and adult gastrointestinal tract. Expressed at about equal levels in colon and small intestine but much less in stomach.

## Images

---

WB Suggested Anti-Lgals4 Antibody Titration: 0.2-1 µg/ml



ELISA Titer: 1:1562500  
Positive Control: Mouse Brain

Please note: All products are 'FOR RESEARCH USE ONLY. NOT FOR USE IN DIAGNOSTIC OR THERAPEUTIC PROCEDURES'.