

SARDH antibody - middle region

Rabbit Polyclonal Antibody

Catalog # AI12004

Product Information

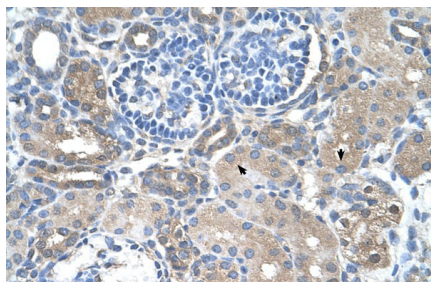
Application	WB, IHC
Primary Accession	Q05BT1
Other Accession	NM_001134707 , AAH33217
Reactivity	Human, Mouse, Rat, Zebrafish, Pig, Dog, Horse, Bovine
Predicted	Human, Mouse, Rat, Chicken, Dog, Horse
Host	Rabbit
Clonality	Polyclonal
Calculated MW	67 KDa

Additional Information

Alias Symbol	DMGDHL1, FLJ36475, SAR, SARD, SDH, BPR-2
Format	Liquid. Purified antibody supplied in 1x PBS buffer with 0.09% (w/v) sodium azide and 2% sucrose.
Reconstitution & Storage	Add 100 ul of distilled water. Final anti-SARDH antibody concentration is 1 mg/ml in PBS buffer with 2% sucrose. For longer periods of storage, store at 20°C. Avoid repeat freeze-thaw cycles.
Precautions	SARDH antibody - middle region is for research use only and not for use in diagnostic or therapeutic procedures.

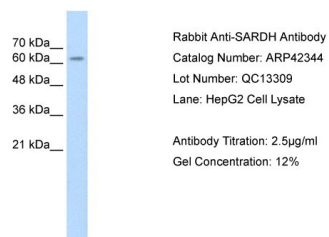
Protein Information

Images



Rabbit Anti-SARDH Antibody
Paraffin Embedded Tissue: Human Kidney
Cellular Data: Epithelial cells of renal tubule
Antibody Concentration: 4.0-8.0 µg/ml
Magnification: 400X

WB Suggested Anti-SARDH Antibody Titration: 2.5µg/ml
Positive Control: HepG2 cell lysate



SARDH is supported by BioGPS gene expression data to be expressed in HepG2

Please note: All products are 'FOR RESEARCH USE ONLY. NOT FOR USE IN DIAGNOSTIC OR THERAPEUTIC PROCEDURES'.