

GPR161 antibody - N-terminal region

Rabbit Polyclonal Antibody

Catalog # AI12005

Product Information

Application	WB, IHC
Primary Accession	Q8N6U8
Other Accession	NM_153832 , NP_722561
Reactivity	Human, Mouse, Rat, Rabbit, Pig, Dog, Horse
Predicted	Human, Mouse, Rabbit, Pig, Dog, Horse
Host	Rabbit
Clonality	Polyclonal
Calculated MW	58559

Additional Information

Gene ID	23432
Alias Symbol	FLJ33952, RE2
Other Names	G-protein coupled receptor 161, G-protein coupled receptor RE2, GPR161
Format	Liquid. Purified antibody supplied in 1x PBS buffer with 0.09% (w/v) sodium azide and 2% sucrose.
Reconstitution & Storage	Add 100 ul of distilled water. Final anti-GPR161 antibody concentration is 1 mg/ml in PBS buffer with 2% sucrose. For longer periods of storage, store at 20°C. Avoid repeat freeze-thaw cycles.
Precautions	GPR161 antibody - N-terminal region is for research use only and not for use in diagnostic or therapeutic procedures.

Protein Information

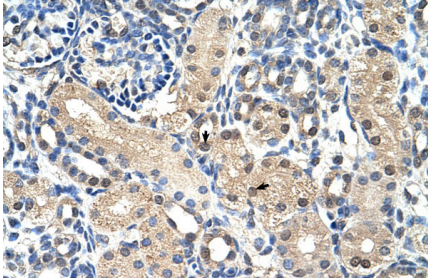
Name	GPR161
Function	Key negative regulator of Shh signaling, which promotes the processing of GLI3 into GLI3R during neural tube development. Recruited by TULP3 and the IFT-A complex to primary cilia and acts as a regulator of the PKA-dependent basal repression machinery in Shh signaling by increasing cAMP levels, leading to promote the PKA-dependent processing of GLI3 into GLI3R and repress the Shh signaling. In presence of SHH, it is removed from primary cilia and is internalized into recycling endosomes, preventing its activity and allowing activation of the Shh signaling. Its ligand is unknown (By similarity).
Cellular Location	Cell projection, cilium membrane; Multi-pass membrane protein. Cell membrane; Multi-pass membrane protein. Note=Mainly localizes to primary

cilium in a TULP3 and IFT-A complex-dependent manner. In presence of SHH, it is removed from primary cilia and is internalized into recycling endosomes and is apparently not degraded (By similarity).

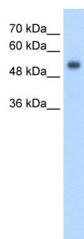
References

Small, K.M., FEBS Lett. 516 (1-3), 253-256 (2002) Reconstitution and Storage: For short term use, store at 2-8°C up to 1 week. For long term storage, store at -20°C in small aliquots to prevent freeze-thaw cycles.

Images



Rabbit Anti-GPR161 Antibody
Paraffin Embedded Tissue: Human Kidney
Cellular Data: Epithelial cells of renal tubule
Antibody Concentration: 4.0-8.0 µg/ml
Magnification: 400X



WB Suggested Anti-GPR161 Antibody Titration: 2.5 µg/ml
Positive Control: HepG2 cell lysate

Please note: All products are 'FOR RESEARCH USE ONLY. NOT FOR USE IN DIAGNOSTIC OR THERAPEUTIC PROCEDURES'.