

# LGALS13 antibody - N-terminal region

Rabbit Polyclonal Antibody

Catalog # AI12008

## Product Information

---

<b>Application</b>	WB
<b>Primary Accession</b>	<a href="#">Q9UHV8</a>
<b>Other Accession</b>	<a href="#">NM_013268</a> , <a href="#">NP_037400</a>
<b>Reactivity</b>	Human
<b>Predicted</b>	Human
<b>Host</b>	Rabbit
<b>Clonality</b>	Polyclonal
<b>Calculated MW</b>	16119

## Additional Information

---

<b>Gene ID</b>	29124
<b>Alias Symbol</b>	GAL13, PLAC8, PP13
<b>Other Names</b>	Galactoside-binding soluble lectin 13, Galectin-13, Gal-13, Placental tissue protein 13, PP13, Placental protein 13, LGALS13, PLAC8
<b>Format</b>	Liquid. Purified antibody supplied in 1x PBS buffer with 0.09% (w/v) sodium azide and 2% sucrose.
<b>Reconstitution &amp; Storage</b>	Add 50 ul of distilled water. Final anti-LGALS13 antibody concentration is 1 mg/ml in PBS buffer with 2% sucrose. For longer periods of storage, store at 20°C. Avoid repeat freeze-thaw cycles.
<b>Precautions</b>	LGALS13 antibody - N-terminal region is for research use only and not for use in diagnostic or therapeutic procedures.

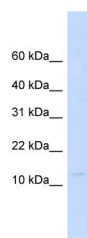
## Protein Information

---

<b>Name</b>	LGALS13
<b>Synonyms</b>	PLAC8
<b>Function</b>	Binds beta-galactoside and lactose. Strong inducer of T-cell apoptosis (PubMed: <a href="#">10527825</a> , PubMed: <a href="#">19497882</a> ). Has hemagglutinating activity towards chicken erythrocytes (PubMed: <a href="#">29343868</a> ).
<b>Cellular Location</b>	Cytoplasm. Nucleus matrix
<b>Tissue Location</b>	Detected in adult and fetal spleen, fetal kidney, adult urinary bladder and placenta. Placental expression originates predominantly from the

## Images

---



WB Suggested Anti-LGALS13 Antibody Titration: 0.2-1  
µg/ml  
ELISA Titer: 1:312500  
Positive Control: Human heart

Please note: All products are 'FOR RESEARCH USE ONLY. NOT FOR USE IN DIAGNOSTIC OR THERAPEUTIC PROCEDURES'.