

CLEC4M antibody - middle region

Rabbit Polyclonal Antibody

Catalog # AI12013

Product Information

Application	WB
Primary Accession	Q9H2X3
Other Accession	NM_014257 , NP_055072
Reactivity	Human, Mouse, Rat, Rabbit, Zebrafish, Pig
Predicted	Human, Rat
Host	Rabbit
Clonality	Polyclonal
Calculated MW	45350

Additional Information

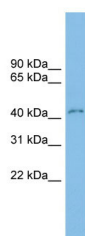
Gene ID	10332
Alias Symbol	CD209L, CD299, DC-SIGN2, DC-SIGNR, DCSIGNR, HP10347, L-SIGN, LSIGN, MGC129964, MGC47866
Other Names	C-type lectin domain family 4 member M, CD209 antigen-like protein 1, DC-SIGN-related protein, DC-SIGNR, Dendritic cell-specific ICAM-3-grabbing non-integrin 2, DC-SIGN2, Liver/lymph node-specific ICAM-3-grabbing non-integrin, L-SIGN, CD299, CLEC4M, CD209L, CD209L1, CD299
Format	Liquid. Purified antibody supplied in 1x PBS buffer with 0.09% (w/v) sodium azide and 2% sucrose.
Reconstitution & Storage	Add 50 ul of distilled water. Final anti-CLEC4M antibody concentration is 1 mg/ml in PBS buffer with 2% sucrose. For longer periods of storage, store at 20°C. Avoid repeat freeze-thaw cycles.
Precautions	CLEC4M antibody - middle region is for research use only and not for use in diagnostic or therapeutic procedures.

Protein Information

Name	CLEC4M
Synonyms	CD209L, CD209L1, CD299
Function	Probable pathogen-recognition receptor involved in peripheral immune surveillance in liver. May mediate the endocytosis of pathogens which are subsequently degraded in lysosomal compartments. Is a receptor for ICAM3, probably by binding to mannose-like carbohydrates.

Cellular Location	[Isoform 1]: Cell membrane; Single- pass type II membrane protein [Isoform 3]: Cell membrane; Single- pass type II membrane protein [Isoform 6]: Secreted. [Isoform 10]: Secreted.
Tissue Location	Predominantly highly expressed in liver sinusoidal endothelial cells and in lymph node. Found in placental endothelium but not in macrophages. Expressed in type II alveolar cells and lung endothelial cells.

Images



WB Suggested Anti-CLEC4M Antibody Titration: 0.2-1
µg/ml

ELISA Titer: 1:1562500

Positive Control: Human kidney

Please note: All products are 'FOR RESEARCH USE ONLY. NOT FOR USE IN DIAGNOSTIC OR THERAPEUTIC PROCEDURES'.