

# PSD3 antibody - middle region

Rabbit Polyclonal Antibody

Catalog # AI12018

## Product Information

---

<b>Application</b>	WB, IHC
<b>Primary Accession</b>	<a href="#">Q9NYI0-3</a>
<b>Other Accession</b>	<a href="#">NM_206909</a> , <a href="#">NP_996792</a>
<b>Reactivity</b>	Human, Mouse, Rat, Rabbit, Zebrafish, Dog, Horse, Bovine
<b>Predicted</b>	Human, Mouse, Rat, Zebrafish, Bovine
<b>Host</b>	Rabbit
<b>Clonality</b>	Polyclonal
<b>Calculated MW</b>	56 kDa

## Additional Information

---

<b>Alias Symbol</b>	DKFZp761K1423, EFA6R, HCA67
<b>Format</b>	Liquid. Purified antibody supplied in 1x PBS buffer with 0.09% (w/v) sodium azide and 2% sucrose.
<b>Reconstitution &amp; Storage</b>	Add 100 ul of distilled water. Final anti-PSD3 antibody concentration is 1 mg/ml in PBS buffer with 2% sucrose. For longer periods of storage, store at 20°C. Avoid repeat freeze-thaw cycles.
<b>Precautions</b>	PSD3 antibody - middle region is for research use only and not for use in diagnostic or therapeutic procedures.

## Protein Information

---

## References

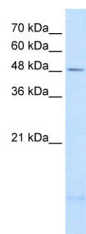
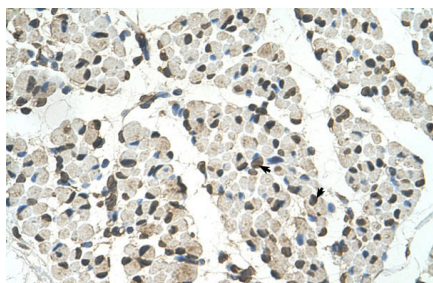
---

Pils,D., (2005) Cancer 104 (11), 2417-2429  
Reconstitution and Storage:For short term use, store at 2-8C up to 1 week. For long term storage, store at -20C in small aliquots to prevent freeze-thaw cycles.

## Images

---

Human Muscle



WB Suggested Anti-PSD3 Antibody Titration: 2.5µg/ml  
Positive Control: A204 cell lysate  
PSD3 is strongly supported by BioGPS gene expression data to be expressed in Human A204 cells

Please note: All products are 'FOR RESEARCH USE ONLY. NOT FOR USE IN DIAGNOSTIC OR THERAPEUTIC PROCEDURES'.