

L3MBTL4 antibody - N-terminal region

Rabbit Polyclonal Antibody

Catalog # AI12037

Product Information

Application	WB
Primary Accession	Q8NA19
Other Accession	NM_173464 , NP_775735
Reactivity	Human, Mouse, Rat, Rabbit, Dog
Predicted	Human, Mouse, Rabbit, Dog
Host	Rabbit
Clonality	Polyclonal
Calculated MW	71122

Additional Information

Gene ID	91133
Alias Symbol	HsT1031
Other Names	Lethal(3)malignant brain tumor-like protein 4, H-l(3)mbt-like protein 4, L(3)mbt-like protein 4, L3MBTL4
Format	Liquid. Purified antibody supplied in 1x PBS buffer with 0.09% (w/v) sodium azide and 2% sucrose.
Reconstitution & Storage	Add 50 ul of distilled water. Final anti-L3MBTL4 antibody concentration is 1 mg/ml in PBS buffer with 2% sucrose. For longer periods of storage, store at 20°C. Avoid repeat freeze-thaw cycles.
Precautions	L3MBTL4 antibody - N-terminal region is for research use only and not for use in diagnostic or therapeutic procedures.

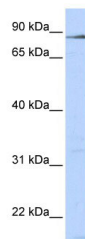
Protein Information

Name	L3MBTL4
Function	Putative Polycomb group (PcG) protein. PcG proteins maintain the transcriptionally repressive state of genes, probably via a modification of chromatin, rendering it heritably changed in its expressibility (By similarity).
Cellular Location	Nucleus.

References

Loftus, J. C., (1987) Proc. Natl. Acad. Sci. U.S.A. 84(20), 7114-7118 Reconstitution and Storage: For short term use, store at 2-8°C up to 1 week. For long term storage, store at -20°C in small aliquots to prevent freeze-thaw cycles.

Images



WB Suggested Anti-L3MBTL4 Antibody Titration: 0.2-1
µg/ml
ELISA Titer: 1:1562500
Positive Control: 293T cell lysate

Please note: All products are 'FOR RESEARCH USE ONLY. NOT FOR USE IN DIAGNOSTIC OR THERAPEUTIC PROCEDURES'.