

Lhx5 antibody - middle region

Rabbit Polyclonal Antibody

Catalog # AI12046

Product Information

Application	WB
Primary Accession	P61375
Other Accession	NM_008499 , NP_032525
Reactivity	Human, Mouse, Rat, Rabbit, Zebrafish, Pig, Dog, Guinea Pig, Horse, Bovine
Predicted	Human, Mouse, Rat, Pig, Chicken, Dog, Guinea Pig, Bovine
Host	Rabbit
Clonality	Polyclonal
Calculated MW	44388

Additional Information

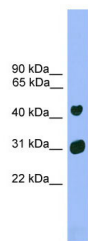
Gene ID	16873
Alias Symbol	Lim2
Other Names	LIM/homeobox protein Lhx5, LIM homeobox protein 5, Lhx5
Format	Liquid. Purified antibody supplied in 1x PBS buffer with 0.09% (w/v) sodium azide and 2% sucrose.
Reconstitution & Storage	Add 50 ul of distilled water. Final anti-Lhx5 antibody concentration is 1 mg/ml in PBS buffer with 2% sucrose. For longer periods of storage, store at 20°C. Avoid repeat freeze-thaw cycles.
Precautions	Lhx5 antibody - middle region is for research use only and not for use in diagnostic or therapeutic procedures.

Protein Information

Name	Lhx5
Function	Plays an essential role in the regulation of neuronal differentiation and migration during development of the central nervous system.
Cellular Location	Nucleus.

Images

WB Suggested Anti-Lhx5 Antibody Titration: 0.2-1 µg/ml



ELISA Titer: 1:312500
Positive Control: Mouse Heart

Please note: All products are 'FOR RESEARCH USE ONLY. NOT FOR USE IN DIAGNOSTIC OR THERAPEUTIC PROCEDURES'.