

CREB1 antibody - N-terminal region

Rabbit Polyclonal Antibody

Catalog # AI12057

Product Information

Application	WB
Primary Accession	Q01147
Other Accession	NM_009952 , NP_034082
Reactivity	Human, Mouse, Rat, Rabbit, Pig, Dog, Guinea Pig, Horse, Bovine
Predicted	Human, Mouse, Rat, Pig, Chicken, Dog, Horse, Bovine
Host	Rabbit
Clonality	Polyclonal
Calculated MW	35122

Additional Information

Gene ID	12912
Alias Symbol	Creb, Creb-1, AV083133, 2310001E10Rik, 3526402H21Rik
Other Names	Cyclic AMP-responsive element-binding protein 1, CREB-1, cAMP-responsive element-binding protein 1, Creb1, Creb-1
Format	Liquid. Purified antibody supplied in 1x PBS buffer with 0.09% (w/v) sodium azide and 2% sucrose.
Reconstitution & Storage	Add 50 ul of distilled water. Final anti-CREB1 antibody concentration is 1 mg/ml in PBS buffer with 2% sucrose. For longer periods of storage, store at 20°C. Avoid repeat freeze-thaw cycles.
Precautions	CREB1 antibody - N-terminal region is for research use only and not for use in diagnostic or therapeutic procedures.

Protein Information

Name	Creb1
Synonyms	Creb-1
Function	Phosphorylation-dependent transcription factor that stimulates transcription upon binding to the DNA cAMP response element (CRE), a sequence present in many viral and cellular promoters (By similarity). Transcription activation is enhanced by the TORC coactivators which act independently of Ser-119 phosphorylation (By similarity). Involved in different cellular processes including the synchronization of circadian rhythmicity and the differentiation of adipose cells (PubMed: 11970866 , PubMed: 21728997). Regulates the expression of apoptotic and inflammatory response factors in

cardiomyocytes in response to ERFE-mediated activation of AKT signaling (PubMed:[30566056](#)).

Cellular Location

Nucleus {ECO:0000255 | PROSITE-ProRule:PRU00312, ECO:0000255 | PROSITE-ProRule:PRU00978, ECO:0000269 | PubMed:21728997}

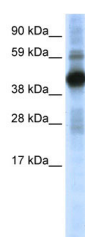
Tissue Location

Expressed in the heart (at protein level).

References

Pittenger, C., et al., (2006) J. Neurosci. 26(10), 2808-2813 Reconstitution and Storage: For short term use, store at 2-8°C up to 1 week. For long term storage, store at -20°C in small aliquots to prevent freeze-thaw cycles.

Images



WB Suggested Anti-CREB1 Antibody Titration: 0.2-1 µg/ml
ELISA Titer: 1:312500
Positive Control: SP2/O cell lysate

Please note: All products are 'FOR RESEARCH USE ONLY. NOT FOR USE IN DIAGNOSTIC OR THERAPEUTIC PROCEDURES'.