

EGR4 antibody - C-terminal region

Rabbit Polyclonal Antibody

Catalog # AI12068

Product Information

Application	WB
Primary Accession	Q05215
Other Accession	NM_001965 , NP_001956
Reactivity	Human, Mouse, Rat, Rabbit, Zebrafish, Pig, Dog, Guinea Pig, Horse, Bovine
Predicted	Human, Mouse, Rat, Rabbit, Pig, Chicken, Dog, Guinea Pig, Horse, Bovine
Host	Rabbit
Clonality	Polyclonal
Calculated MW	61623

Additional Information

Gene ID	1961
Alias Symbol	NGFIC, NGFI-C, PAT133
Other Names	Early growth response protein 4, EGR-4, AT133, EGR4
Format	Liquid. Purified antibody supplied in 1x PBS buffer with 0.09% (w/v) sodium azide and 2% sucrose.
Reconstitution & Storage	Add 50 ul of distilled water. Final anti-EGR4 antibody concentration is 1 mg/ml in PBS buffer with 2% sucrose. For longer periods of storage, store at 20°C. Avoid repeat freeze-thaw cycles.
Precautions	EGR4 antibody - C-terminal region is for research use only and not for use in diagnostic or therapeutic procedures.

Protein Information

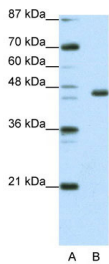
Name	EGR4
Function	Transcriptional regulator. Recognizes and binds to the DNA sequence 5'-GCGGGGGCG-3' (GSG). Activates the transcription of target genes whose products are required for mitogenesis and differentiation (By similarity).
Cellular Location	Nucleus.

References

Decker, E.L., (2003) Nucleic Acids Res. 31(3), 911-921 Reconstitution and Storage: For short term use, store at 2-8°C up to

1 week. For long term storage, store at -20°C in small aliquots to prevent freeze-thaw cycles.

Images



WB Suggested Anti-EGR4 Antibody Titration: 0.0625µg/ml
ELISA Titer: 1:312500
Positive Control: Jurkat cell lysate

Please note: All products are 'FOR RESEARCH USE ONLY. NOT FOR USE IN DIAGNOSTIC OR THERAPEUTIC PROCEDURES'.