

# FOXG1B antibody - C-terminal region

Rabbit Polyclonal Antibody

Catalog # AI12073

## Product Information

Application	WB
Primary Accession	<a href="#">Q86XT7</a>
Other Accession	<a href="#">NM_005249</a> , <a href="#">NP_005240</a>
Reactivity	Human, Mouse, Rat, Zebrafish, Dog, Horse, Bovine
Predicted	Human, Mouse, Rat, Chicken, Bovine
Host	Rabbit
Clonality	Polyclonal
Calculated MW	52 KDa

## Additional Information

Alias Symbol	BF1, BF2, QIN, FKH2, HBF2, HFK1, HFK2, HFK3, KHL2, FHL3, FKHL1, FKHL2, FKHL3, FKHL4, HBF-1, HBF-2, HBF-3, FOXG1A, FOXG1B, FOXG1C, HBF-G2
Format	Liquid. Purified antibody supplied in 1x PBS buffer with 0.09% (w/v) sodium azide and 2% sucrose.
Reconstitution & Storage	Add 100 ul of distilled water. Final anti-FOXG1B antibody concentration is 1 mg/ml in PBS buffer with 2% sucrose. For longer periods of storage, store at 20°C. Avoid repeat freeze-thaw cycles.
Precautions	FOXG1B antibody - C-terminal region is for research use only and not for use in diagnostic or therapeutic procedures.

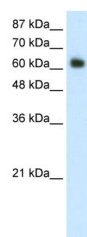
## Protein Information

## References

Tan, K., (2003) J. Biol. Chem. 278(23), 20507-20513  
Reconstitution and Storage: For short term use, store at 2-8°C up to 1 week. For long term storage, store at -20°C in small aliquots to prevent freeze-thaw cycles.

## Images

WB Suggested Anti-FOXG1B Antibody Titration: 1.25 µg/ml  
ELISA Titer: 1:312500  
Positive Control: Transfected 293T



Please note: All products are 'FOR RESEARCH USE ONLY. NOT FOR USE IN DIAGNOSTIC OR THERAPEUTIC PROCEDURES'.