

Grhl2 Antibody - N-terminal region

Rabbit Polyclonal Antibody

Catalog # AI12086

Product Information

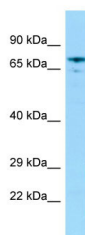
Application	WB
Primary Accession	B5DEI9
Other Accession	NM_001134527 , NP_001127999
Reactivity	Human, Mouse, Rat, Rabbit, Zebrafish, Pig, Dog, Guinea Pig, Horse, Bovine
Predicted	Human, Mouse, Rat, Rabbit, Zebrafish, Pig, Dog, Guinea Pig, Horse, Bovine
Host	Rabbit
Clonality	Polyclonal
Calculated MW	68 kDa

Additional Information

Alias Symbol	RGD1561191
Format	Liquid. Purified antibody supplied in 1x PBS buffer with 0.09% (w/v) sodium azide and 2% sucrose.
Reconstitution & Storage	Add 50 ul of distilled water. Final anti-Grhl2 antibody concentration is 1 mg/ml in PBS buffer with 2% sucrose. For longer periods of storage, store at 20°C. Avoid repeat freeze-thaw cycles.
Precautions	Grhl2 Antibody - N-terminal region is for research use only and not for use in diagnostic or therapeutic procedures.

Protein Information

Images



WB Suggested Anti-Grhl2 Antibody Titration: 1.0 µg/ml
Positive Control: Rat Stomach